



# Igaliku, Garðar

60.828660° N, -45.783157° E  
UNESCO World Heritage Protected Site

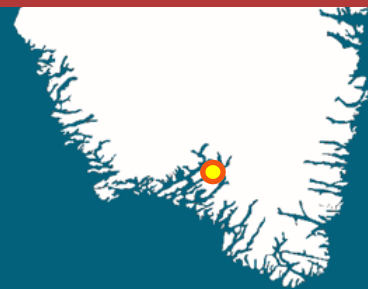


Illustration by Nuka Gottfredsen

## GUIDELINES FOR VISITORS

- **When landing:** Local residents have priority at the docks and pontoon bridges. Do not block access or ask locals to move their boats.
- Larger groups of visitors should be accompanied by a qualified guide and stay on the gravel roads and visitor paths.
- Be mindful to not block the road and always give the right of way to tractors, ATVs and vehicles.
- Never walk or cut across the grass fields and close all gates behind you.
- Stay at least 2 meters (6 feet) from the edge of ancient ruins and never walk, sit, climb or stand on the walls of ancient ruins and features.
- Never pick up or move objects from the ground. This includes stones, bones, plants and flowers. Leave everything undisturbed and never build cairns or stack stones at the site or anywhere else in Greenland.
- Do not approach or pet animals. This includes sheep, horses, cattle, cats, chickens and dogs. Sheep dogs are working animals and interacting with these animals can change their behavior and may result in them being put down. **Dogs from outside must always be kept on a leash!**
- Never enter a house, shed or stable without consent from the owners, this includes houses that look uninhabited. Never take photos of local people, houses or animals without permission.

## DIFFICULTY LEVEL: EASY

Flat terrain with marked paths inside the Garðar ruins and gravel roads inside the settlement. The ground can be wet in some areas so wear appropriate footwear.

## MOBILE APP

Download the **Kujataa Mobile App** before you go. There is limited wi-fi and mobile connection in Igaliku. The app can be used offline.



App Store - Apple iOS



Android GooglePlay



KOMMUNE KUJALLEQ

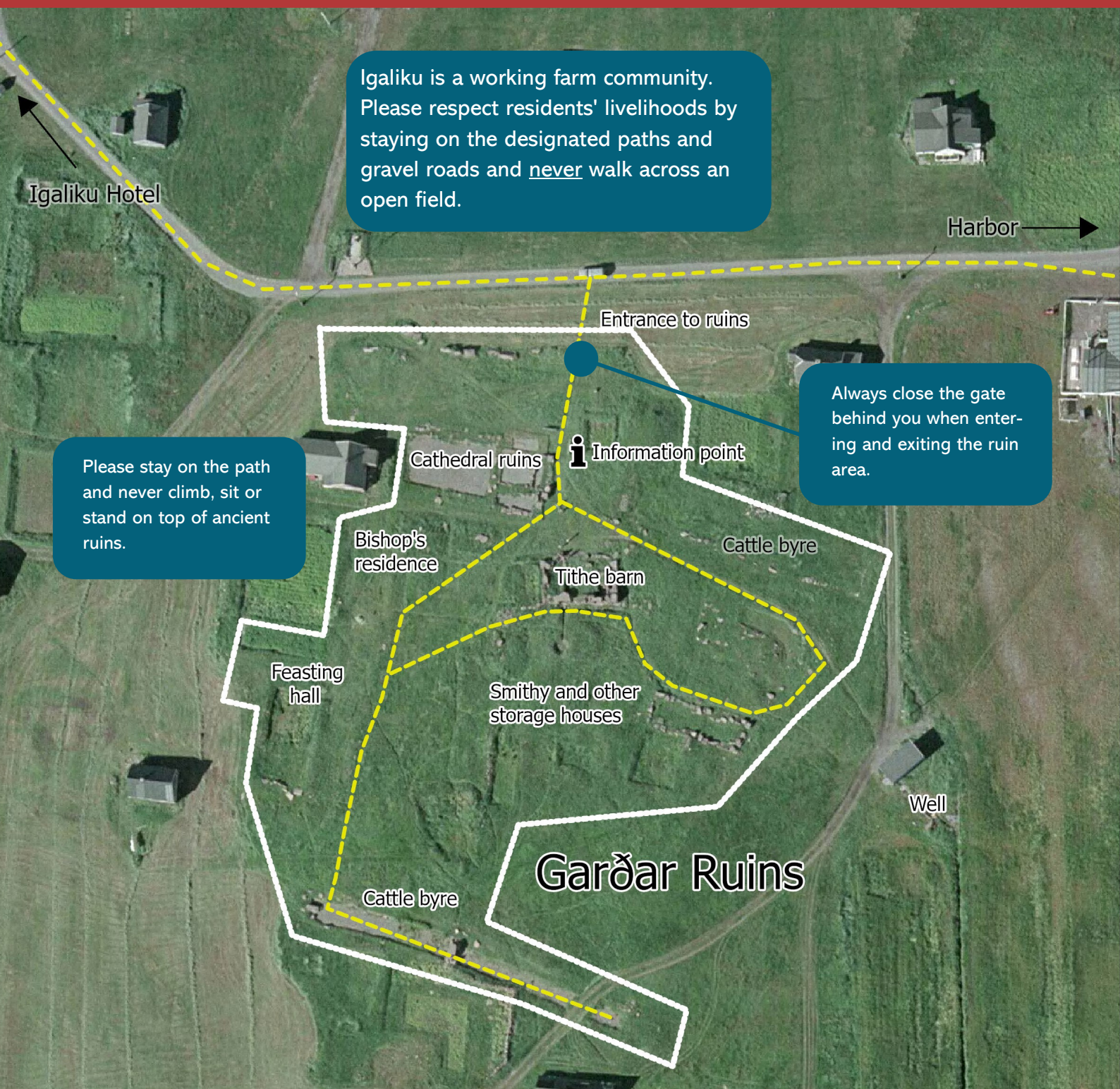
INNOVATION  
SOUTH GREENLAND

Innovation South Greenland A/S  
Havnevej B-1338  
3920 Qaqortoq, Greenland  
info@isg.gl



Nunatta Katerougaasivia Allagaateqarfialu  
Green and National Museum & Archives





## CONTACT INFORMATION:

AQQALUAQ OLE FREDERIKSEN, UNESCO SITE MANAGER

+299 64 71 32

af@isg.gl

GREENLAND NATIONAL MUSEUM AND ARCHIVES

+299 32 26 11

nka@natmus.gl

ELSE ARNAQ BJERGE PETERSEN, UNESCO PARK RANGER

+299 64 71 34

eb@isg.gl

POLICE & EMERGENCY SERVICES

+299 112



KOMMUNE KUJALLEQ

**INNOVATION**  
SOUTH GREENLAND

Innovation South Greenland A/S  
Havnevej B-1338  
3920 Qaqortoq, Greenland  
info@isg.gl



Nunatta Katerugaasivia Allagaateqarfialu  
Green and National Museum & Archives