

**Report on an archaeological survey
between Eqalummiut and Angujaartorfik, West Greenland
performed for Hudson Resources area
June 18th – July 4th 2012**



Greenland National Museum and Archives

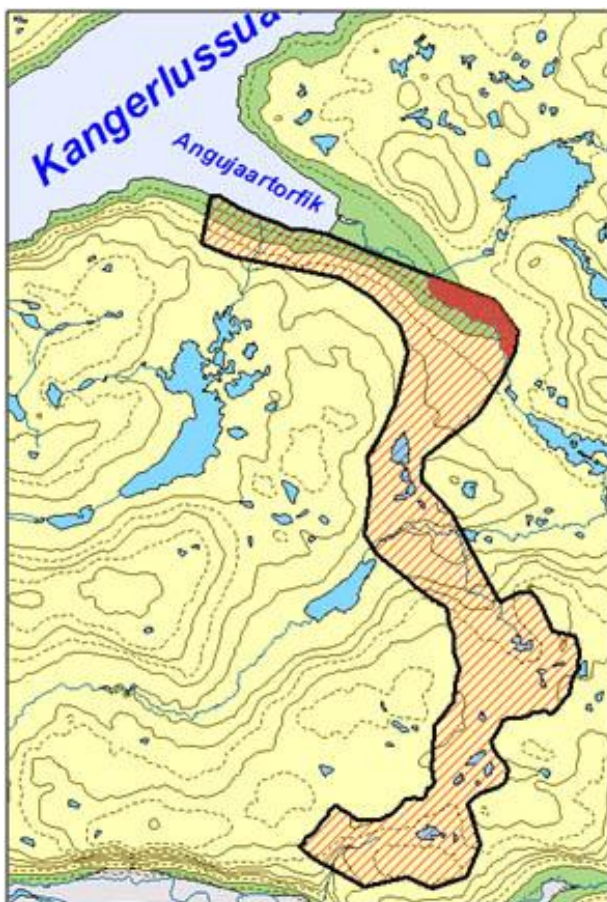
**Report no. 201301
by**

Pauline K. Knudsen, Fuuja Larsen & Pernille Ødegaard

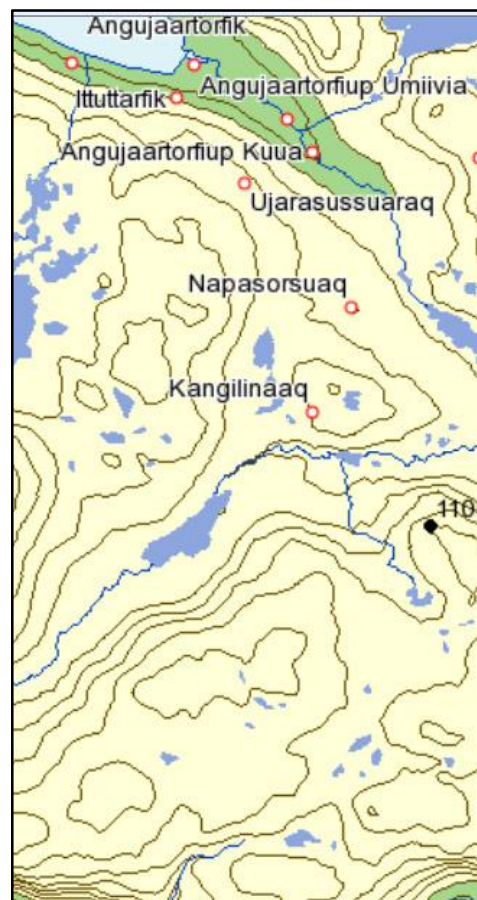
[www. natmus.gl](http://www.natmus.gl), P.O. Box 145, 3900 Nuuk, Greenland

Introduction

In the autumn of 2011 Hudson Resources (HR) requested an archaeological survey from Greenland National Museum and Archives (NKA). Data from the survey will make part of the feasibility studies for exploitation of rare earth elements (REE). The company have since 2009 undertaken exploration in an area next to Eqalummiut to the north (license 2010/40, Sarfartoq). Period and area for the survey were set and a report on archival studies on the cultural history in area were delivered to HR in the spring of 2012. Based upon a signed agreement between the parties staff from Greenland National Museum undertook the survey from June 18th to July 4th 2012. This report is the outcome of the survey. The identified pre-historic and historic structures are described and documented by means of photographs, in some cases sketches or DGPS mapping and geographic co-ordinates for location of structures are given. A preliminary assessment of the cultural value of the landscapes has been undertaken and some suggestions for locations of mining facilities and related infrastructure are given where possibilities for conflict with listed archaeological structures can be reduced. The report is supplemented with maps illustrating the surveyed areas. Although not included in the outlined survey area it was considered important to map the site of Angujaartorfik because it is a significant heritage site situated next to the area intended for location of mining facilities and because the site must be considered in context with the rest of the surveyed areas.



Map no.1: Archaeological survey area. The red area indicates part of the area which was not surveyed.



Map 2: The Area as it appears in Nuna-Gis-map. Some of the named locations are not correctly positioned.

Table of contents

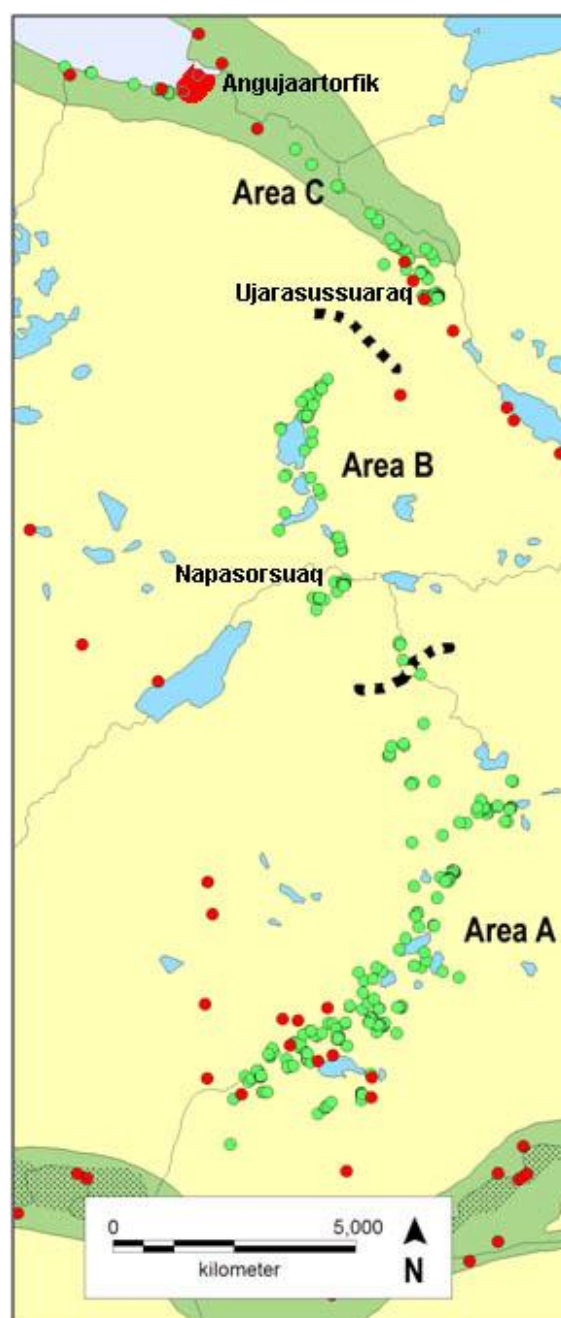
Introduction	2
Summary	4
Protected monuments and areas	5
The Culture historical background	6
Manmade structures used in the interior	8
Hunting structures	8
Temporary dwelling structures	9
Dwelling structures	9
Markers or cairns	10
The survey	10
Description of mapped monuments and sites	11
Area A	11
Concluding remarks on survey of area A	43
Area B	44
Concluding remarks on survey of area B	53
Area C	53
The site of Angujaartorvik	64
List of structures at western part of Angujaartorvik	65
List of structures at eastern part of Angujaartorvik	67
List of structures on eastern most area of Angujaartorvik	69
Concluding remarks on survey of area C	70
Concluding remarks on the results from the survey	71
Maps	72
Table of structures in area A	76
Table of structures in area A continued	77
Table of structures in area B	78
Table of structures in area C	78
Table of structures previously mapped	79
List of photos	79
Bibliography	88

Summary

During the survey 478 archaeological structures were mapped in addition to 35 sites previously listed in Greenland Antiquities Database (GAD). A total of 513 structures are thus mapped in the survey area. 75 of these structures are not protected by the conservation act of Greenland because they are considered to be too recent. The majority of the recent structures except from structures at site 61 and the site of Angujaartorfik are tent rings. In the two mentioned sites recent structures for meat drying and arrangements of wooden tables and benches, smokers for char and restrooms are not protected. A total of 438 protected structures were mapped during the survey.

Tabel no. 1: Relative distribution of structures in areas

	Area A	Area B	Area C
Tent house	6	7,8	16
Tent ring	7	7,8	8,5
Lookout	1	8	
Hunter's bed	11	17	3,5
Hearth	3	14	16
Cache	12	17	8
Play house	0,5	1,5	1
Grave	0,5	1,5	12
Rock shelter	0,5		2,5
Cairn system	3		
Shooting bl	51	19	2
Fox trap	0,5		3,5
Single cairn	2		2
Marking		2	2
Midden			9
Other	2	4,6	14
Total	100%	100%	100%



Map no.3: Green dots are newly mapped structures, the reds are the previously mapped

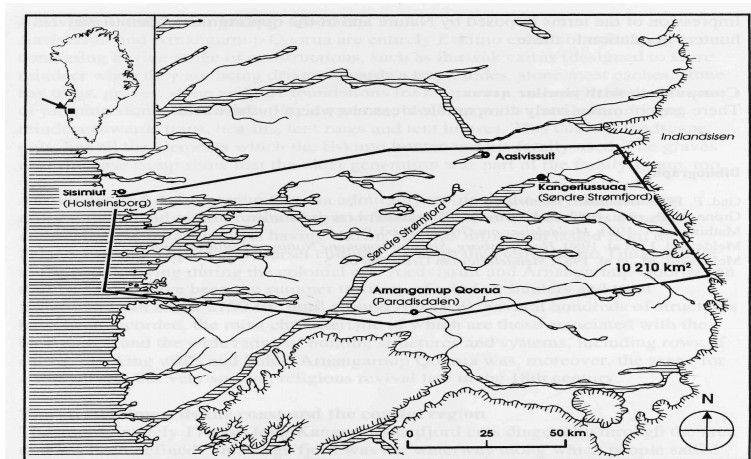
Protected monuments and areas

According to the conservation act of Greenland of 19 May 2010 (Inatsisartutlov nr. 11 af 19. maj 2010 om fredning og anden kulturarvsbeskyttelse af kulturminder) all ancient monuments from before year 1900, including ruins, settlements, graves and burial grounds, are protected. Detached graves from year 1900 onwards are also protected. Section 6 paragraph 1 and 2 in the conservation act states a buffer zone of 20 metres around each monument where no activities except from agricultural activities and establishment of paths are allowed.

The survey area situated in Angujaartorfiup Nunaa which is the most intensively used seasonal caribou hunting area of Inuit from the Thule Culture in West and South Greenland and of their descendants. Many of the stone built dwelling and hunting structures in this area have been reused over and over again and have been altered during use. Also stones from earlier monuments have been reused. As such, the monuments and sites often have a long history of altering use. Some structures are up to 700 years old. The sites of Angujaartorfik, Ujarasussuaq and Napasorsuaq as well as the surrounding hunting areas are still in active use as a continuation of a tradition reaching hundreds of years back in time. For this reason even monuments appearing to be in use today must be regarded as part of tradition reaching hundreds of years back in time.

Tent rings are one category of structures to be found on sites and widespread in the landscape of the survey area which are not protected by the conservation act as tents were not taken into use in the interior regions before year 1900.

Part of the area given in the exploration license (2010/40, Sarfartoq) was accepted on the UNESCO tentative list in 2004. See map no. 4 below for outline of area. Though it is not the intention that the whole of the designated area will be nominated for a world heritage site. When nomination process starts it is the plan to propose a serial nomination of certain smaller areas within the outlined area. According to the description at the UNESCO listing it is %Amangarngup Qoorua+in the Paradise Valley (probably the legally protected area in the valley) which is emphasized as a significant heritage area south of Kangerlussuaq. In addition Greenland National Museum regards the site of Angujaartorfik and the valley up to Ujarasussuaq as another important area as a candidate for a world heritage site.



Map no. 4: Outline of the area accepted on the UNESCO tentative list for world heritage sites in 2004.

The culture historical background

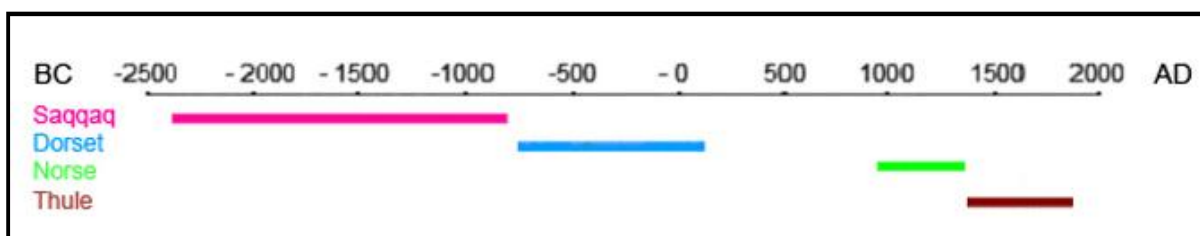
West Greenland has been settled by several migrations of hunters and gatherers from North America and one of Norse farmers from Iceland during the last 4500 years.

West Greenland was for the first time settled by Stone Age hunters approximately by 2400 BC. Remnants from these people are named the Saqqaq Culture. As all following arctic hunters to populate Greenland they were migrants from Arctic North America. Finds from the culture are known from all over West Greenland and way up on the east coast of Greenland. Large scale excavations at two localities in West Greenland and the largest settlement from the culture situated on the northern shore of Angujaartorfik Bay indicate the importance of caribou as a resource for the Saqqaq people (Kapel, 1996; Meldgaard, 2004 and Godtfredsen & Møbjerg, 2004). Remains from this culture are found at several sites in Angujaartorfiup Nunaa.

Whether a cultural transition happened between Saqqaq and Greenlandic Dorset is now being discussed as the gap without archaeological finds especially in Sisimiut area is closing. People of the Dorset Culture populated West Greenland in the period from 800 BC to 0 AD. No sure sign of the presence of the Dorset Culture are found in Angujaartorfiup Nunaa although one site is known in the Kangerlussuaq Fjord.

Around 985 AD the Norse populated part of West Greenland. They settled in South Greenland and in the fiords east of Nuuk. The Norse disappeared from the last mentioned area by the middle of the 14th century and totally abandoned living in Greenland in the middle of 15th century. Although the oral tradition of the Inuit hints at the Norse population's use of Angujaartorfiup Nunaa no archaeological traces have been found here. In this region only one elaborate gaming piece from the Norse have been found at head of Amerloq Fjord just south of Sisimiut.

During the 13th century the Inuit - the people of the Thule Culture - entered the northern most part of West Greenland and spread along all coastal areas of the country in the following two centuries. Like the Inuit from their place of origin in the North Western part of Alaska hunting large whale was important for their livelihood. Gradually Inuit adapted to the local conditions and large whales hunting became limited to the area between Sisimiut and the Disko Island on the west coast.



Diag. 1: The diagram shows the presence of past cultures in West Greenland

The uneven distribution of resources along the west coast of Greenland was the impetus for trade with goods. At the end of the 17th century when European whalers started hunting in West Greenland a long distance exchange of resources facilitated by trade journeys were already established with Inuit from South Greenland as middlemen. The caribou population

in Angujaartorfiup Nunaa was most likely one of the preconditions that made the trade journeys possible (Knudsen, 2009) as the travellers had to winter in the north.

Angujaartorfiup Nunaa was renowned for its rich caribou population sustainable for a considerable hunting pressure in periods where the ever fluctuating population peaked. The many dwellings and hunting structures recorded on archaeological surveys in Angujaartorfiup Nunaa during the last 10 years verify the intensive use of the area (Andreasen, 2000; Grønnow, 1982; Kapel, 1987; Knudsen, 2009 and Odgaard, 2008). ±

Both the oral tradition and the written sources tell of the considerable amount of Inuit from South Greenland travelling north (Petersen, 1992 and Berthelsen, 2003). The missionary Hans Egede (1925:19, 49, 185 and 208) describes a camp of more than hundred tents of southerners making a stay near to his colony in the 1720s.

The Inuit system of hunting territories among others regulated a sustainable hunting. The ability for this system in the area between Sisimiut and Disko Bay to incorporate the hunting pressure from the wintering southerners can be explained by the surpluses following catches of the bowhead whale that can weigh up to 100 tonnes and the successful hunts of caribou when the populations peaked. Plenty of articulated caribou bones found in archaeological test pits at a site called L14 in Angujaartorfiup Nunaa (Pasda and Odgaard, 2011) are interpreted as periods with surpluses of caribou.

The gradual Danish-Norwegian colonization of West Greenland starting in 1721 AD included most of West Greenland by 1800 AD and had made Inuit dependent on western goods sold in trading posts established along the coast. By the end of that period the Inuit southerners had stopped their trade journeys. From that time on Angujaartorfiup Nunaa was mainly used by the populations living immediately south and north of Kangerlussuaq. The traditional use of the area continued until 1950, though not as intensive as during the time before 1920s where industrialisation based on fishing started in a smaller scale and after which the caribou population declined.

From 1950~~ies~~ the caribou population was again growing and made hunting at near coastal areas possible. From that time on the tradition for spending the summer in the interior of Angujaartorfiup Nunaa ceased as such along stay could not be fitted into the rhythm of an industrialised society. Though people from Kangaamiut and the settlements to the south of Sisimiut still keeps up the tradition for hunting and harvesting provision for the winter by the site of Angujaartorfik. The small stock of musk oxen introduced from North East Greenland in the 1960~~ies~~ have multiplied and have given the importance of Angujaartorfik as a gathering place a come-back because the relative easily hunted oxen are attracting hunters from as far south as the Nuuk area.

The Inuit hunters Jens Kreutzmann and Aron of Kangeq have taken part in the hunting at Angujaartorfiup Nunaa in the mid 19th century. They have written down stories and tales of events in the area. Several events from these can be related to sites and structures in the area (Aron of Kangeq, 1999 and Kreutzmann, 1997).

Information on the activities in the interior of Angujaartorfiup Nunaa before 1950 has been collected through interviews with women from Kangaamiut (Knudsen, 2002). During the summer caribou hunt food and skins were produced for winter supplies. The meat not consumed at the camp was dried and stored for transport to the winter settlement. Bones

were cracked and boiled. The melted marrow was collected in containers made from stomachs or pericardia. Skins were dried for bedding and clothes. When musk oxen were released for hunting in the 1980s their meat was treated and dried in the same way as the caribou meat (Berthelsen, Goliathsen and K. Lyberth, 2002).

According to the oral tradition (Berthelsen, 2003; K. Lyberth, 2002) and the map drawn by Kreutzmann in 1863 (see map no.12 page 76), one of the main routes to the interior passes through the survey area starting from Angujaartorfik following the southern bank of Angujaartorfik River, turning southwest a little east of Ujarasussuaraq following the valley to Napasorsuaq and continuing southwest up to the plateau where it again takes a southwestern direction until it turns in a southerly direction near to the descent to the Paradise Valley and the campsite of Eqalummiut.

Manmade structures used in the interior

A wide variety of manmade structures can be found in the inland hunting areas. Only structures used by the Thule culture and their descendants will be described in the following as the archaeological survey only identified structures deriving from use by these. All traditional Inuit structures are made from natural materials occurring in the vicinity, most often stones and in some cases turf. Already existing natural formations like boulders, rock walls and sheltered places are often included in the construction of the structures. Some of the sites are also situated around huge boulders. The manmade structures are not always easily discerned from natural formations and can be very difficult to see even with trained eyes. For that reason it is obvious that not all of the manmade structures in the survey area were identified. Even though the team systematically traversed the survey area, some individual structures must unavoidably have been missed.

Hunting structures

Structures used in the hunt are widespread in the landscape. Except from the fox trap hunting structures, all which are related to the time before use of shotguns. The most common structures are the shooting blinds where hunters with bows and arrows were waiting for the game to get into shooting range. Shooting blinds can vary a lot in construction. The most common form is a semi circular row of stones. Some blinds might have been used by the earlier cultures as this have been the case by Aasivissuit north of Kangerlussuaq (Grønnow, 1983:53).

Cairn systems were used for driving caribou to places where the killing of a herd could be done more easily e.g. in lakes, boulder fields or other places where the animals could not easily escape. Cairn systems can vary a lot in size and construction. Mostly they are made by placing stones at prominent places like boulders or ridges.

Lookouts are usually a circular frame built from stones at vantage points in the landscape where hunters for hours comfortably could keep an eye on game.

The use of the described hunting structures ceased around year 1800 after the introduction of the gun for caribou hunting.

Fox traps are mostly found in the vicinity of camp sites. Foxes were not wanted by the camp sites because they would take the meat spread out for drying or whatever they could scavenge at the camp. The traps are difficult to date. Many of the traps probably have been made by the earliest Thule Culture people and have been reused up till the last century. It cannot be ruled out that this type of structure also have been used by people from the earlier cultures. Fox traps are usually built on solid rock. It consists of a small box open in one end. The box covered with stones though leaving the opening free.

Meat caches can also be found in hunting territories. The bag would some times be cached for later pick up when the hunting party continued the hunt after a catch. They are also to be found at overnight places on the routes between the coast and the interior. Mostly they are found at shady places as round heaps of stones.

Temporary dwelling structures

Some structures were built for sleeping away from the base camps on hunting trips lasting more than a day or when travelling between coast and base camp. These structures include hunter's beds, shelters and caves.

Hunter's beds are like open air beds made as enclosures of stone to be filled with grass, twigs and heather. They are often situated against a boulder, rock wall or under the overhang of either. They vary in length between one and eight meters.

After 1900 AD small canvas tents and later nylon tents were often used for temporary overnight stays instead of hunter's beds. The ring of stone visible after removal of the tent is the stones that kept the canvas to the ground.

By overnight sleeping places hearths and caches usually also occurs.

Dwelling structures

Dwellings used in the inland hunting season comprise various types which have tentatively been classified according to age and by purpose. The tent house was used as dwelling in the base camps. Bringing the summer tent made from skins and driftwood poles for a camp one or several days walk away from the coast would be burdensome. The tent house was the solution to that problem. It is a semisubterranean dwelling which can be described as a combination of a house and a tent. The low walls were built from stones and if possible turf. Roofing was made from caribou skins.

The oldest ruins from these structures usually are shaped like the number eight. The smaller circular room made the entrance and cooking place and the bigger the living room. Some of the older tent houses can have a quite simple outline like a square one room structure. The oldest types are rather small and often the living room did not make more than 4m².

Probably in the 19th century the tent house grew bigger. The living room with a raised sleeping platform at the rear was typically 9 to 10m². The long narrow entrance could be several meters long and often had a niche for cooking.

The most recent type was probably introduced in the middle of the 20th century as it is mainly found in the near coastal areas. It is a horseshoe shaped tent ring or a tent foundation built from turf. The opposite side of the entrance makes the sleeping area. Displaced from the center in the direction of the entrance is a rectangular hole which was intended for putting ones feet into when sitting around the hole. Over this type of structure a canvas or nylon tent was erected.

Markers or cairns

Markers of single stones or cairns are found all over the landscape and are markers for sites, caches, river crossing places etc. The most common type is a stone put on boulder or another prominent feature in the landscape. Other types can consist of several stones put together or a slab supported by another stone.

After 1950 new types of structures appeared in the camps in the coastal areas: Smokers for char, drying racks for meat, restrooms and table and chairs made from wood.

The survey

The archaeological survey was undertaken by a team from NKA consisting of: Archaeologist Pauline Knudsen, museum technician Fuuja Larsen and student Pernille Ødegaard. The two first mentioned have a solid training in archaeological surveys. The survey started at the southern most part of the area and ended by the Angujaartorvik fjord. The weather conditions were excellent except for one day where foggy conditions delayed the survey plans. During the survey the team also paid a short visit at the HR drilling site by Qaqortorsuaq (license 2002/06, Naajat). On July 2nd the survey team took a day off to make inspection of the Saqqaq Culture site situated on the northern side of Angujaartorvik fjord. From June 18th until June 24th Emlen Meyers from ERM took part in the surveys. The survey was a pedestrian reconnaissance where the team systematically walked through the survey area. The area on the northeastern banks of Angujaartorfiup Kuua included in the outline of the surveyed area was not surveyed because crossing the river was impossible during the survey period.

Description of the mapped monuments and sites

Area A

Site 1

On a ridge leading down from a mountain the survey team mapped a site including two hunters' beds and four shooting blinds. The two beds are situated beneath a rock outcrop and the blinds were spread out on the ridge below the beds.

Structure A: A rectangular hunters' bed built from big stones

Measurements: 1.8 x 1.5 m.

Position: W 488803 / N 7380929

Photo no. 55 taken from N (FL)

Structure B: A quadrangular hunters' bed is built of head sized and bigger stones. The bed is built into a big rock making the eastern wall of the structure.

Measurements: 1.5 x 1.3 m.

Position: W 488812 / N 7380957

Photo no. 56 shot from N and 57 shot from W (FL)

Structure C: A shooting blind built of a row of stones of varying sized. The row is oriented SE . NW.

Length: 2 m.

Position: W 488812 / N 7380957

Photo no. 58 shot from N (FL)

Structure D: A shooting blind made of stones of varying size arranged into a slightly curved line.

Length: 3.8 m.

Position: W 488771 / N 7380934

Photo no. 59 from N and no. 60 from W (FL)

Structure E: A shooting blind made of head sized and bigger stones. The blind is slightly curved and is faced to the south.

Length: 3.8 m.

Position: W 488771 / N 7380934

Photo no. 61 from N and no. 62 from W (FL)

Structure F: A shooting blind made of head sized and bigger stones arranged in a semicircular form. The blind is facing towards NW.

Length: 2 m.

Position: W 488727 / N 7380920

Photo no. 63 shot from SE. (FL)

Site 2

This site is situated on a south facing slope and marked with two redish stones put upon a big boulder. The site comprises ten structures: A site marking on a boulder, two meat caches, two hunters bed, two a tent rings a pot cooking hearth and an unidentified structure. One of the hunters beds are situated a distance to the south east to the rest of the structures.

Structure A: Hunters bed, rectangular shape. Made of more than head sized stones.

Measurements: 2.3 x 1.4m.

Position: W 488518 / N 7380482

Photo no: 64 from S and no. 65 from N (FL)

Structure B: A tent ring made of a circle of spaced stones. This structure is not a listed monument.

Measurements: 3.5 x 4m.

Position: W 488504 / N 7380486

Photo no: 66 shot from N (FL)

Structure C: A meat cache by a rock outcrop. Built of many big stones.

Measurements inside structure: 3.4m x 1.4m

Position: W 488506 / N 7380532

Photos: no. 67 taken from W and no. 68 from NW (FL)

Structure D: A meat cache or lookout built between some big rocks.

Measurements inside structure: Length 1.3 x 0.7m

Position: W 488519 / N 7380525

Photo no: 69 taken from N and no. 70 from W (FL)

Structure E: A rectangular small hunters bed. Made from head sized and bigger stones.

Measurements: 0.8 x 1.5m

Position: W 488807 / N 7380393

Photo no: 96 from SE and 97 from NW (PKK)

Position: W 488526 / N 7380558 Photo no: 66 and 90 from N (PKK)

Structure F: A big rock marked with two stones. The rock is surrounded by scatter of stones.

Structure G: A small rectangular structure built from more than head sized stones.

Position: W 488441 / N 7380518

Photo no: 91 from NW and 92 from S (PKK)

Structure H: A recent tent ring made from spaced stones. This structure is not a listed monument.

Position: W 488440 / N 7380517

Photo no: 93 from S (PKK)

Structure I: Pot cooking hearth built from two stones on NW side of a boulder.

Position: W 488445 / N 7380474

Photos no: 94 and 95 from NW (PKK)



Figure1: Stones marking site 2 are seen at the top of the rock by the red and white photo scale.

Structure J: A semicircular south facing shooting blind built from more than head sized stones.

Length: 2.6m

Position: W 488403 / N 7380332

Photo no: 98 from NW and 99 and SE (PKK)

Site 3

A camp site comprising structures both on the northern and southern bank of the creek. The mapped of the site was performed over two days as the eastern most part of the sites was only mapped on June 20th. The site comprises five recent tent rings two meat caches and a possible grave.

Structures A - D: Three tent rings situated by the edge of the ridge on the northern bank of the creek. Tent ring C is rather small approximately only 1.8m in diameter. The rest of the rings are 3.5 - 4.5m in diameter. These structures are not listed monuments.

Position: W 485921 / N 7378926

Photos no: 38 tent ring A from W, 39 ring B from W, 40 ring C and 41 ring D (PKK).

Structure E: A play tentring? The ring made from smaller than head sized stones is situated on the southern bank of the creek.

Diameter: 0.8m

Position: W 486006 / N 7378825

Photo no: 44 (PKK)

Structure F: A meat cache in a boulder field on southern bank of creek.

Measurements: 1 x 0,8m

Position: W 486064 / N 7378896

Photo no: 111 from NE (FL)

Structure G: A possible grave or a meat cache built from stones. Quite overgrown.

Measurements: 2.6 x 1.8m

Position: W 486055 / N 7378906

Photo no: 112 from S, 113 from NW and 114 from W (FL)

Structure H: A circular opened meat cache.

Position: W 486060 / N 7378903

Photo no: 115 from NW (FL)

Site 4

A semicircular shooting blind made from stones.

Length: 3.2 m

Position: W 485778 / N 7378422

Photos no: 89 - 90 (FL)

Site 5

A shooting blind made from three or more head sized stones put on top of bedrock.

Length: Approx: 75 cm

Position: W 485892 / N 7377494

Photo no: 59 (PKK)

Site 6

A hunter's rectangular bed made from bigger than head sized stones. Situated 5 meters west of a rock outcrop.

Position: W 487542 / N 7378448

Photos no: 97 from E and 98 from W (FL).

Site 7

This is a site including four big shooting blinds.

Structure A: A south facing semicircular blind made of big stones put on each side of a low rock outcrop.

Length: 2.9 m

Position: W 487674 / N 7378596

Photo no: 100 from W and 101 from N (FL)

Structure B: Semicircular south facing blind made from headsized and some smaller and bigger stones.

Length: 2.7 m

Position: W 487664 / N 7378616

Photo no: 102 from E and 103 from N (FL)

Structure C: Semicircular south facing blind built by taking advantage of some existing boulders.

Length 2 m.

Position: W 487718 / N 7378650

Photo no: 104 from N (FL)

Structure D: Semicircular south facing shooting blind built from stones by taking advantage of two rocks protruding the ground. Length: 2.4 m
 Position: W 487759 / N 7378736
 Photo no: 105 from N (FL)

Site 8

This site includes two tent rings and four meat caches.

Structure A: A meat cache made of stones built into two small rocks.
 Measurements: 2 x 2.8m
 Position: W 486154 / N 7379092
 Photo no: 68 from SE (PKK)

Structure B: An oval shaped opened meat cache.
 Measurements: 2 x 2.8m
 Position: W 486140 / N 7379089
 Photo no: 107 from SE (FL)

Structure C: A double tent ring made of head sized spaced stones. This structure is not a listed monument.
 Measurements: 4.5 x 3.1m
 Position: W 486244 / N 7378977
 Photo no: 108 from N (FL)

Structure D: A tent ring made from head sized stones. The structure is situated in a sloping area. This structure is not a listed monument.
 Measurements: 4 x 3m
 Position: W 486228 / N 7378976
 Photo no: 109 from NW (FL)

Structure E: A meat cache built from stones. Tin can inside the cache.
 Measurements: 1.1 x 1m
 Position: W 486236 / N 7378980
 Photo no: 110 from NW (FL)

Structure F: A circular opened meat cache .
 Measurements: 1.1 x 0.9m
 Position: W 486246 / N 7378992
 Photo no: 116 from SE (FL)

Site 9

This site includes a hunter's bed, a meat cache and a shooting blind.

Structure A: An opened meat cache built between rocks.
 Measurements: 1.2 x 1.5 m.
 Position: W 486342 / N 7378668
 Photo no. 71 from SE (PKK)

Structure B: A quite long hunter's bed built from bigger than head sized stones which lay deep in the vegetation of grass, moss and heather.

Measurements: 5.9 x 2 m

Position: W 486362 / N 7378672

Photo no: 72 from SE (PKK)

Structure C: A semicircular shooting blind built from one big, two head sized and smaller stones.

Length: 2 m

Position: W 486432 / N 7378693

Photo no: 117 (FL)

Site 10

The site is a base camp situated on a south facing slope beneath a ridge with a good view over the plain to the south. The site comprises two tent houses a tent ring a hunters bed and two caches.

Structure A: A meat cache in boulder field.

Diameter: 0.9m

Position: W 486352 / N 7379418

Photo no: 118 from N (FL)

Structure B: A meat cache built in small boulderfield on a south facing slope.

Measurements: 1.5 x 1.1m

Position: W 486357 / N 7379453

Photo no: 120 from NW (FL)

Structure C: A quadrangular tent house with a niche. A boulder makes the southern corner.

The entrance is just to the east of the boulderMeasurements: 2.7 x 2m

Position: W 486333 / N 7379479

Photo no: 121 from E (FL)

Structure D: A rectangular tent house situated at the end of the slope. Built from head sized and bigger stones including a boulder. The entrance is situated on the southeastern side of the house.

Measurements: 2.3 x 2m

Position: W 486409 / N 7379526

Photo no: 122 from E and 123 from N (FL)

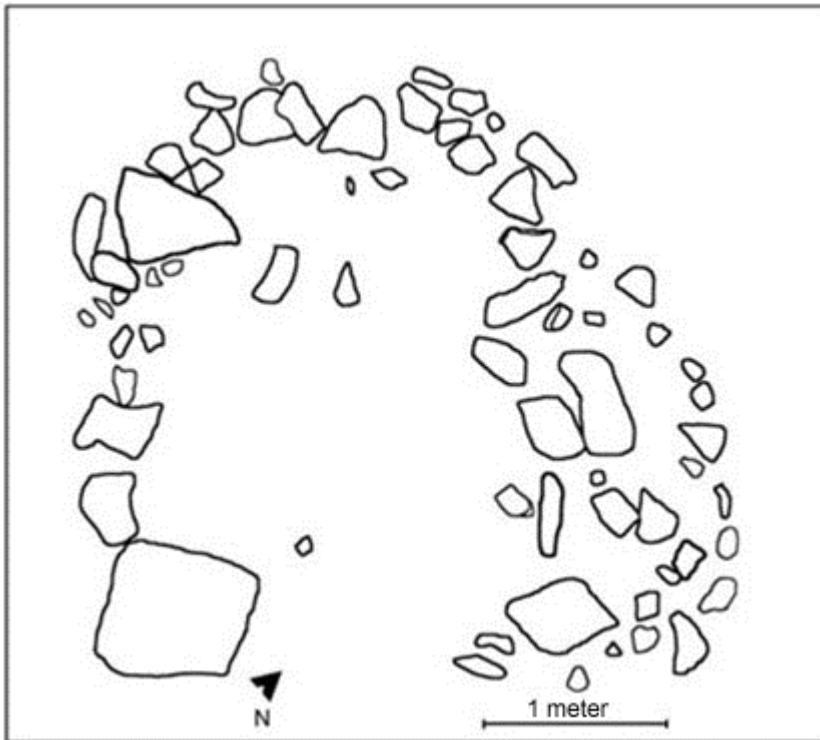


Figure no. 2: Sketch of structure 10C

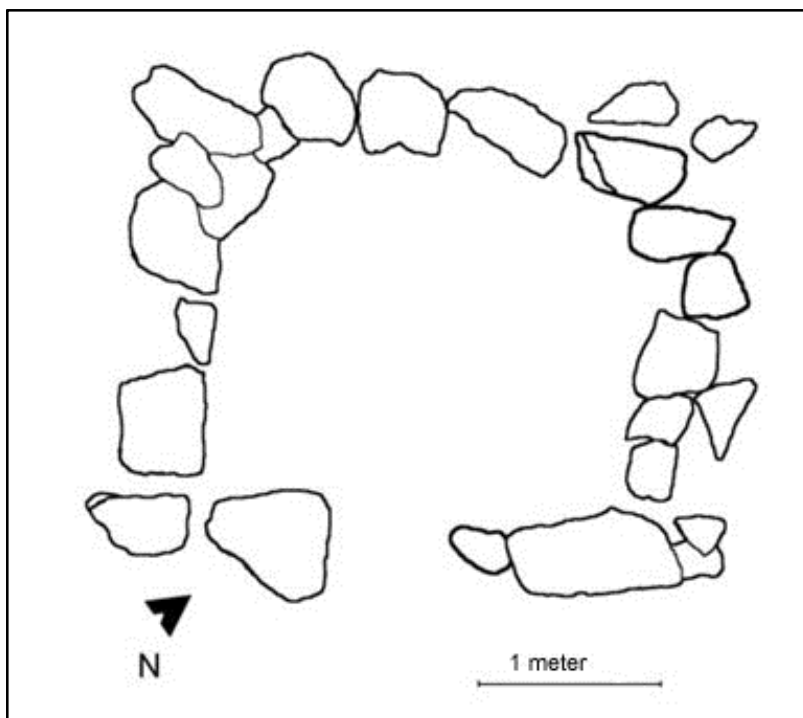


Figure no. 2: Sketch of tent house 10D.

Structure E: A tent ring made from head sized spaced stones. A boulder is situated immediately north west to the structure.

Diameter: 3m

Position: W 486359 / N 7379588

Photo not taken

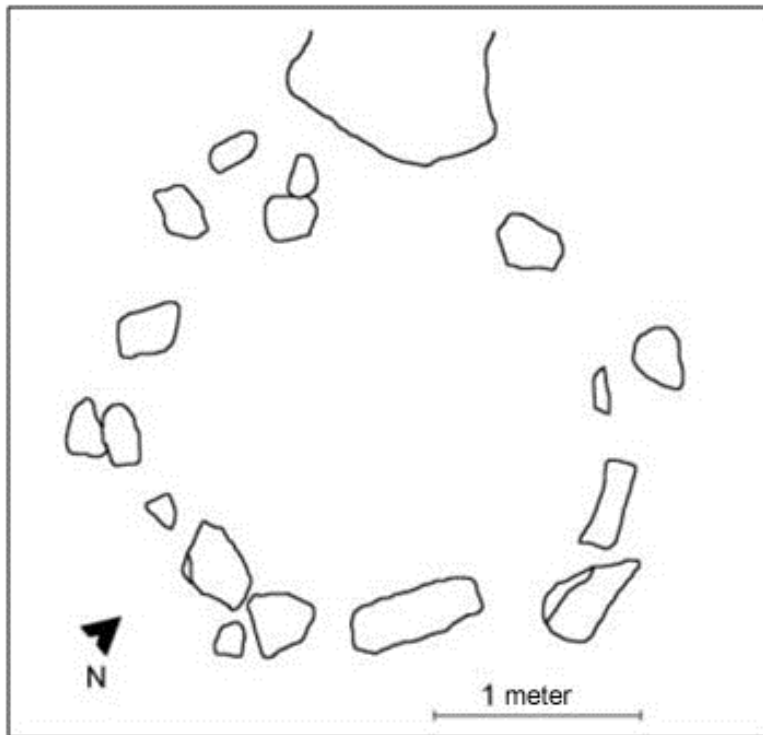


Figure no. 4: Sketch of tent ring 10E.

Structure F: A hunter's bed built from stones and turf.

Measurements: 2 x 1.5m

Position: W 486311 / N 7379464

Photo no: 125 from SW and 126 from E (FL)

Site 11

A hunting area with five shooting blinds and four meat caches situated in an area west of the lake.

Structure A: A semicircular south facing shooting blind made from head sized and bigger stones.

Length: 3m

Position: W 486690 / N 7379441

Photo no: 74 from S and 75 from E (PKK)

Structure B: A round meat cache built on northern side of a rock.

Diameter: 1.5m

Position: W 486749 / N 7379277

Photo no: 78 from W (PKK)

Structure C: A south facing shooting blind, built around an earthbound boulder from seven big stones.

Length: 3 m

Position: W 486744 / N 7379278

Photo no: 76 from S + 77 from N (PKK)

Structure D: A semicircular meatcache built into a boulder from 3 big stones and six headsized stones.

Length: 2.2m

Position: W 486850 / N 7379325

Photo no: 79 from E (PKK)

Structure E: A south facing semicircular shooting blind built from head sized and bigger stones.

Length: 2.5m

Position: W 487108 / N 7379506

Photo no: 80 from S and 81 from NE (PKK)

Structure F: An opened circular meat cache built from many head sized stones.

Diameter: 2m

Position: W 487109 / N 7379497

Photo no: 82 from W (PKK)

Structure G: A south facing semicircular shooting blind. Built into a rock from 5 head sized and smaller stones.

Length: 1.5m

Position: situated 0,5 S of structure F.

Photo no: 83 from SW (PKK)

Structure H: A semicircular south facing meat cache built upon a depression.

Length: 1.8m

Position: W 487118 / N 7379510

Photo no: 84 from N (PKK)

Structure I: A shooting blind made from head sized and smaller stones aligned in a row in a S - N oriented line.

Length: 2m

Position: W 487186 / N 7379472

Photo no: 85 from W (PKK)

Site 12

A hunting area at the foot of the slope comprising eight shooting blinds and a hunter's bed.

Structure A: A semicircular shooting blind facing south

Length: 3.7m

Position: W 486775 / N 7379790

Photo no: 131 from N (FL)

Structure B: A hunter's bed or shooting blind made from bigger than head sized stones.

Position: W 486789 / N 7379791

Photo no: 132 from W (FL)



Figure 5: Structure 11C is one of the many shooting blinds situated in the valley leading up to Hudson Camp from southwest.

Structure C: A semicircular shooting blind made from big stones.

Length: 2.4m

Position: W 486812 / N 7379813

Photo no: 133 from W (FL)

Structure D: A semicircular shooting blind facing SW.

Length: 2.3m

Position: W 486845 / N 7379816

Photo no: 134 from NE (FL)

Structure E: A south facing shooting blind built by taking advantage of stones protruding the ground.

Length: 2m

Position: W 486843 / N 7379781

Photo no: 135 from NW (FL)

Structure F: A north west facing shooting blind.

Length: 2m

Position: W 486899 / N 7379744

Photo no: 136 from SW (FL)

Structure G: A semicircular shooting blind facing NE.

Length: 2m

Position: W 486903 / N 7379730

Photo no: 137 from SW (FL)

Structure H: A semicircular disturbed shooting blind facing NE.

Measurements: 2.5 m

Position: W 486916 / N 7379800

Photo no: 138 from SW (FL)

Structure I: A semicircular west facing shooting blind. Built from seven stones.

Length: 2 m

Position: W 486916 / N 7379798

Photo no: 139 from N (FL)

Site 13

This site includes two shooting blinds.

Structure A: NE-facing shooting blind made by filling the space between two boulders with stones.

Measurements 2.5m

Position: W 486935 / N 7380006

Photo no: 140 from SW (FL)

Structure B: SW-facing shooting blind built from 12 head sized stones.

Length: 3.3m

Position: W 487171 / N 7380033

Photo no: 141 from N (FL)

Site 14

A camp site including a shelter a hunter's bed and a shooting blind.

Structure A: A shelter under a big boulder. The shelter is outlined with a row of stones on the S-side of the boulder and the SW part of the overhang is built up with stones where the leaks are filled with smaller stones. The stone paved shelter floor is scattered with bones. Shelter can probably house 3 - 4 persons.

Position: W 487070 / N 7380108

Photo no: 142 and 143 from S, 144 from SW and 146 from E (FL)

Structure B: A hunter's bed or shooting blind SE of shelter.

Photo no: 145 from N (FL)

Structure C: A hunter's bed approximately 20 m E of shelter.

Measurements: 2 x 1.5m

Position: W 487078 / N 7380106

Photo no: 147 from W (FL)

Site 15

This site includes two shooting blinds.

Structure A: A shooting blind facing to the west.

Length: 2.5 m

Position: W 487394 / N 7380322

Photo no: 148 from N (FL)

Structure B: A shooting blind facing south west

Length: 2m

Position: W 487489 / N 7380332

Photo no: 150 from NE (FL)

Site 16

A south facing semicircular shooting blind built from fairly big stones and few smaller ones.

Length: 2.5m

Position: W 487213 / N 7380016

Photo no: 86 from W and 87 from NE (PKK)

Site 17

This site includes a shooting blind and a cairn.

Structure A: Semicircular NE-facing shooting blind made from head sized spaced stones.

The blind is probably disturbed as some of the stones in the structure seems to be displaced.

Some few meters south of the blind is a marker stone put upon a small boulder

Length: 1.6m

Position: W 487577 / N 7380236

Photo no: 89 (PKK)

Structure B: A cairn made by placing a smaller light stone upon a boulder on a ridge.

Position: W 487313 / N 7380097

Photo no: 88 (PKK)

Site 18

A site including two shooting blinds.

Structure A: A semicircular NE facing shooting blind made from head sized and smaller stones.

Position: W 487065 / N 7379638

Photo no: 300 from SW (POE)

Structure B: A south facing semicircular shooting blind built of mainly headsized stones.

Length: 2.3m

Position: W 487087 / N 7379631

Photo no: 301 and 302 from S (POE)

Site 19

A campsite comprising two huntersqbed a tent ring and two hearths. The site is situated on a slope by a small creek.

Structure A: A rectangular hunterq bed not far from the creek. The stones are quite big and some lay deep in the ground.

Measurements: 2.1 x 1.7m

Position: W 488373 / N 7380486

Photo no: 303 from SE + 304 from NW (POE)

Structure B: A hearth, next to the hunterq bed built into a large boulder.

Position: W 488372 / N 7380486

Photo no: 305 from N + 306 from N (POE)

Structure C: A disturbed tent ring by a small creek, head sized spaced stones make an oval ring.

Measurements: 3 x 2.4m

Position: W 488379 / N 7380502

Photo no: 307 from E (POE)

Structure D: A hearth built into a boulder.

Position: W 488380 / N 7380497

Photo no: 308 from W (POE)

Structure E: A hunterq bed made from stones of varying size. Northern part of the structure does not have a stone built wall.

Measurements: 0.8 x 1.5m

Position: W 488397 / N 7380491

Photo no: 100 from N (PKK)

Site 20

This site includes two shooting blinds.

Structure A: A shooting blind, facing south situated in a passage approx 20m east of a creek

Length: 2m

Position: W 488363 / N 7380824

Photo no: 151 from N (FL)

Structure B: A shooting blind, facing north situated 10 m south of A. Built by placing four stones in a row.

Length: 1.4m

Position: W 488355 / N 7380812

Photo no: 152 from S (FL)

Site 21

A site including two shooting blinds and a meat cache

Structure A: A shooting blind, facing south built by placing 4 head sized rocks in row against a boulder.

Position: W 488235 / N 7380617

Photo no: 153 from N (FL)

Structure B: A south facing shooting blind situated 10m west of A built from four big stones.

Position: W 488225 / N 7380610

Photo no: 154 from N (FL)

Structure C: A meat cache, built at the foot of a slope and situated 30m south of A and B

Measurements: 2 x 0.7m

Position: W 488233 / N 7380590

Photo no: 155 from N (FL)

Site 22

A site including a shooting blind and meat cache

Structure A: Shooting blind, build from five big stones, facing west.

Measurements: 1.8m

Position: W 488207 / N 7380506

Photo no: 156 from East (FL)

Structure B: A small cache, not opened, but probably disturbed by foxes as bones are spread around in the area close to structure.

Position: W 488220 / N 7380499

Photo no: 157 (FL)

Site 23

A site including seven shooting blinds a hunters beds and a cache.

Structure A: A shooting blind, facing southwest, built from 10 stones of various sizes.

Length: 2m

Position: W 487664 / N 7380102

Photo no: 158 from East (FL)

Structure B: A semicircular south facing shooting blind by the edge of an escarpment

Position: W 487858 / N 7379936

Photo no: 101 from N (PKK)

Structure C: A shooting blind, semi circular, facing west. Head sized and bigger stones used in the construction, including 2 protruding rocks.

Length: 3.4

Position: W 487653 / N 7380029

Photo no: 102 from W (PKK)

Structure D: A west facing shooting blind built from three stones against a boulder.

Position: W 487641 / N 7380097

Photo no: 159 from E (FL)

Structure E: A west facing, shooting blind built from 8 stones.

Length: 2.2m

Position: W 487617 / N 7380089

Photo no: 160 from E

Structure F: A semicircular west facing shooting blind built around a protruding rock of head sized and bigger stones.

Length: 2.8m

Position: W 487634 / N 7380029

Photo no: 103 from W and 104 from E (PKK)

Structure G: A southwest facing shooting blind built upon 3 big stones.

Position: W 487650 / N 7380054

Photo no: 162 from N (FL)

Structure H: A hunter's bed built on the north side of a boulder, which makes the south wall of the stone enclosure made by big stones.

Measurements: 2.5 x 0.8m

Position: W 487647 / N 7380051

Photo no: 107 from N (PKK)

Structure I: A circular meat cache just east of E

Position: W 487617 / N 7380089 (same as E)

Photo no: 161 (FL)

Site 24

A site including two hunter's beds built on each side of a big boulder.

Structure A: A rectangular shaped hunter's bed built against a boulder which makes the northern wall of the three sided enclosure made from head sized and bigger stones.

Measurements: 1.7 x 1.3m

Position: W 487741 / N 7380394

Photo no: 163 from S (FL)

Structure B: A rectangular hunter's bed built against the northern side of the boulder. The outline of the structure is made from spaced stones which lay deeper in the ground than the bed at the S-side of the boulder. Probably this one was built earlier than bed A.

Measurements: 2 x 1 m

Position: W 487740 / N 7380401

Photo no: 164 from N (FL)

Site 25

This site includes a tent house and hunters bed situated on a slope facing to the south.

Structure A: A quadrangular tent house where the big stones making the outline of structure lays deep in the ground covered with grass.

Measurements: 2.7 x 2.3 m

Position: W 487760 / N 7380755

Photo no: 165 (FL)

Structure B: A hunter's bed built from big stones that have now sunken deep into the grass covered ground.

1.5 x 1 m

Position: W 487760 / N 7380765

Photo no: 166 from N (FL)

Site 26

An opened meat cache built from mainly bigger than head size stones. The outline almost is round.

Measurements: 1.5 x 2m

Position: W 487970 / N 7381083

Photo no: 167 from N (FL)

Site 27

A south facing shooting blind built from three stones placed upon and between two boulders.

Position: W 487947 / N 7381328

Photo no: 168 from N (FL)

Site 28

Structure A: A tent ring of spaced head sized stones which is not a protected by the conservation act.

Diameter: 4m

Position: W 487809 / N 7381477

Photo no: 169 from W (FL)

Structure B: A pot cooking hearth situated 5 m west of structure A.

Photo no: 170 from SW (FL)

Site 29 An east facing shooting blind built by placing a bigger than head sized stone upon a boulder. Another boulder just by the construction is probably part of the structure.

Position: W 488283 / N 7381598

Photo no: 171 from W (FL)

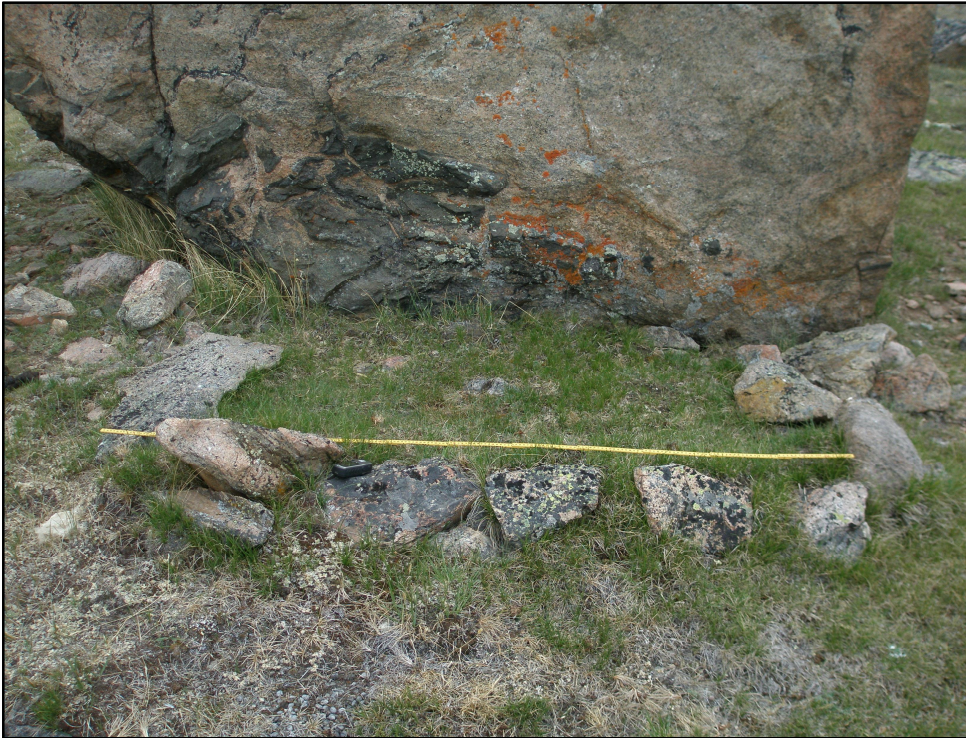


Figure 6: A hunter's bed is a structure where hunters sleeping out in the landscape during their hunt made an enclosure which was filled with twigs and grass for insulation from the cold surface.

Site 30

See description and mapping on records from June 22nd.

Site 31

A semicircular N facing partly disturbed shooting blind.

Length: 2m

Position W 488451 / N 7379462

Photo no: 108 from N and 109 from S (PKK)

Site 32

This site includes three shooting blinds.

Structure A: A n angel shaped shooting blind facing S and W

Measurements: E-W wing 2m and S-N 1.4m

Position: W 488030 / N 7380741

Photo no: 313 fra SW and 314 from S (POE)

Structure B: A semicircular S facing shooting blind

Length: 2.3m

Position: W 488120 / N 7380889

Photo no: 315 from S (POE)

Structure C: A semicircular shooting blind.

Position: W 488221 / N 7380997

Photo no: 132 (PKK)

Site 33

A rectangular hunter's bed built from head sized stones and turf. A boulder makes the southern end of the bed.

Measurements: 3.5 x 1.7m

Position: W 488114 / N 7381396

Photo no: 316 from SE, 317 from SW and 318 from S (POE)

Site 34

A lookout placed by a boulder the on top of a hill.

Position: W 488142 / N 7381646

Photo no: 133 from W (PKK)



Figure no. 7: The congregation of stones on the side of the boulder makes a lookout, where hunters from a vantage point and protected from the wind could keep an eye on the hunting area.

Site 30

This site is listed in the GAD with the number 66V2-0IV-008 and was visited by a survey team surveying the Sarfartoq Valley back in 1981 (Grønnow and Meldgaard). The site is situated on a hill between the valley to the east and a mountain to the west and has a splendid overview over the valleys to the east and north. A pass between the hill and the mountain probably makes a good caribou hunting location. The caribou hunting base camp comprises nine tent houses, two hunter's beds, three caches, a lookout, two shooting blinds and two unidentified structures. Two arrow points were found during the visit in 1981 and the report tell of many visible bones on the surface. The bones must have been overgrown meanwhile as this mapping of the site did not notice the many scatters of bone. The site seems not to have been used in recent times; probably it was abandoned before the mid 19th century as it does not appear on Kreutzmann's map (Kreutzmann, 1997).

Some meters east of structure E a wooden pallet was left, probably by HR drilling team whom obviously had made drillings on the site as a drilling hole was observed in the site and within the buffer zone. The NKA acknowledge that the institution has not supplied the

necessary information on sites with cultural relics, before drilling programs were launched. But must also simultaneously make it clear that it has not been possible to enter accurate positions on cultural monuments in the area due to inadequacy of measuring devices in previous archaeological surveys, and because of the inaccuracies in the available maps.

Structure A: A shooting blind. Head sized and bigger stones ut on the edge of a rock outcrop
Length: 2.6m
Position: W 488332 / N 7379035
Photo no: 119 from E (PKK).

Structure B: A lookout at top of the hill. It is built from big stones as a semicircle.
Diameter: 1.8m
Position: W 488337 / N 7379031
Photo no: 121 from SW (PKK)

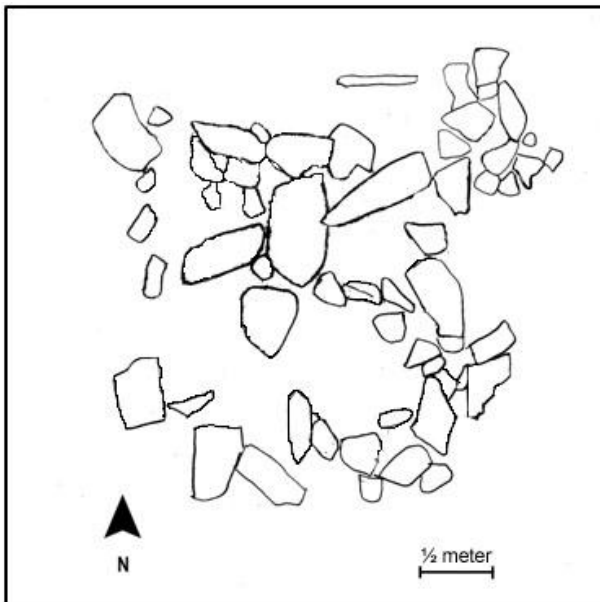


Figure no.8: Lookout structure 30 B

Structure C: A rectangular tenthouse
Measurements: 4,5 x 2 m
Position: W 488355 / N 7379021
Photo no: 122 from N (PKK)

Structure D: Probably a hunter's bed with a quadrangular outline built from bigger than head sized stones.
Length Measurements : 2.2 x 2 m
Position: W 488350 / N 7379015
Photo no: 123 from E (PKK)

Structure E: A rectangular tent house built from big stones.
Measurements: 5.4 x 3m
Position: W 488351 / N 7378998
Photo no: 124 from S and 125 from W (PKK)

Structure F:

A small circular structure built from head sized and smaller stones.

Measurements: 1.5 x 1.6 m

Position: W 488352 / N 7378998

Photo no: 126 from NE (PKK)

Structure G: A tent house complex built around a big rock. The complex comprises three tent houses and probably two caches.

Position: W 488374 / N 7379009

Photo no: 127 from NW, 128 from NW, 129 from S and 130 from N (PKK)

Structure H: A rectangular hunter's bed built from big and head sized stones.

Measurements: 2.4 x 1.6

Position: W 488370 / N 7379015

Photo no: 131 from W (PKK)

Structure I: A circular tent house.

Position: W 488372 / N 7379007

Photo no: 135 from E and 136 from W

Structure J: A meat cache.

Position: W 488356 / N 7378935

Photo no: 137 from NE (PKK)

Structure K: A shooting blind built from five stone placed between two boulders.

Position: W 488365 / N 7378898

Photo no: 138 from E (PKK)

Structure L: A small rectangular tent house built into hill side by the top of the hill. Built from head sized and bigger stones.

Position: W 488352 / N 7379035

Photo no: 139 from W (PKK)

Structure M: A rectangular tenthouse built from big stones into the hill side.

Position: 488349 / N 7379039

Photo no: 140 from W (PKK)

Structure N: A round tent house built from big stones into the hill side.

Position: W 488345 / N 7379042

Photo no: 141 from W (PKK)

Structure O: A semicircular structure built from big stones.

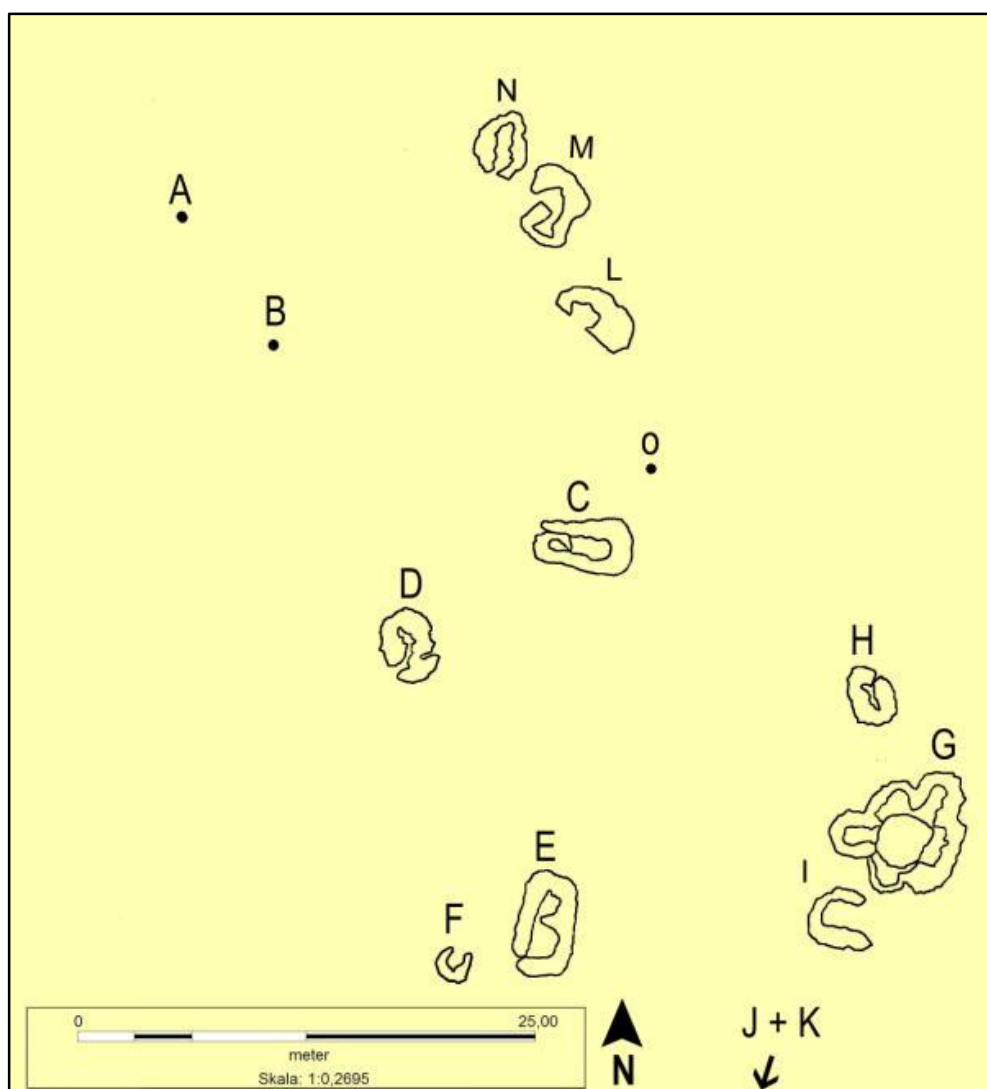
Diameter: 3m

Position: W 488357 / N 7379026

Photo no: 142 from N and 143 from S (PKK)



Figure no. 9: Dwelling C at site 30 (66V-0IV-008).



Map no. 5: Plan over site 30. Structures J and K are situated approximately 20 metres to the south of the site.

Site 35

A shooting blind built on boulders. Facing east.

Position: W 489500 / N 7381817

Photo no: 182 (FL)

Site 36

This site includes two shooting blinds and a hunter's bed.

Structure A: A north facing shooting blind that seems to be disturbed.

Position: W 489127 / N 7382721

Photo no: 183 from S (FL)

Structure B: A north facing shooting blind built from more than head sized stones.

Position: W 489134 / N 7382710

Photo no: 184 from S (FL)

Structure C: A hunter's bed built at the foot of the hill side just beneath and on the S side of a boulder.

Measurements: 2 x 1.5 m

Position: W 489141 / N 7382708

Photo no: 185 from S (FL)

Site 37

The area east of the small lake between lakes surrounding Hudson Camp and the intended talings pond makes an hunting area comprising 20 shooting blinds, a tent house and a meat cache.

Structure A: an east facing shooting blind

Position: W 489295 / N 7383905

Photo no: 187 from W (FL)

Structure B: An east facing shooting blind.

Length: 3.5m

Position: W 489330 / N 7383903

Photo no: 188 from W (FL)

Structure C: An east facing shooting blind.

Length: 2.6m

Position: W 489305 / N 7383860

Photo no: 189 from W (FL)

Structure D: an east facing shooting blind.

Length: 2.7m

Position: W 489327 / N 7383857

Photo no: 190 from W (FL)

Structure E: An east facing shooting blind.

Position: W 489320 / N 7383865

Photo no: 191 from W (FL)

Structure F: A southeast facing shooting blind partly built on bedrock from 8 stones.

Position: W 489360 / N 7383867

Photo no: 192 from NW (FL)

Structure G: An east facing hooting blind.

Position: W 489335 / N 7383879

Photo no: 193 from W (FL)

Structure H: An east facing shooting blind built from four stones.

Position: W 489333 / N 7383887

Photo no: 194 (FL)

Structure I: A hunter's bed built up to southern side of boulder.

Position: W 489306 / N 7383887

Photo no: 195 from S (FL)

Structure J: A north east facing shooting blind.

Position: W 489319 / N 7383901

Photo no: 196 from SW (FL)

Structure K: An east facing shooting blind.

Position: W 489291 / N 7383841

Photo no: 197 from W (FL)

Structure L: An east facing shooting blind.

Length: 2.7m

Position: W 489282 / N 7383847

Photo no: 198 from W (FL)

Structure M: An east facing shooting blind.

Position: W 489272 / N 7383824

Photo no: 199 from W (FL)

Structure N: A tent house with two rooms built into an earthbound boulder. Stones wall in the northeastern room had collapsed into the room.

Measurements: 5 x 2.5m

Position: W 489208 / N 7383803

Photo no: 200: tenthouse from W, 201: room one from W, 202: room two from W, 203: tent house from S and 204: tent house from N (FL)

Structure O: An east facing shooting blind.

Position: W 489076 / N 7383716

Photo no: 205 from W (FL)

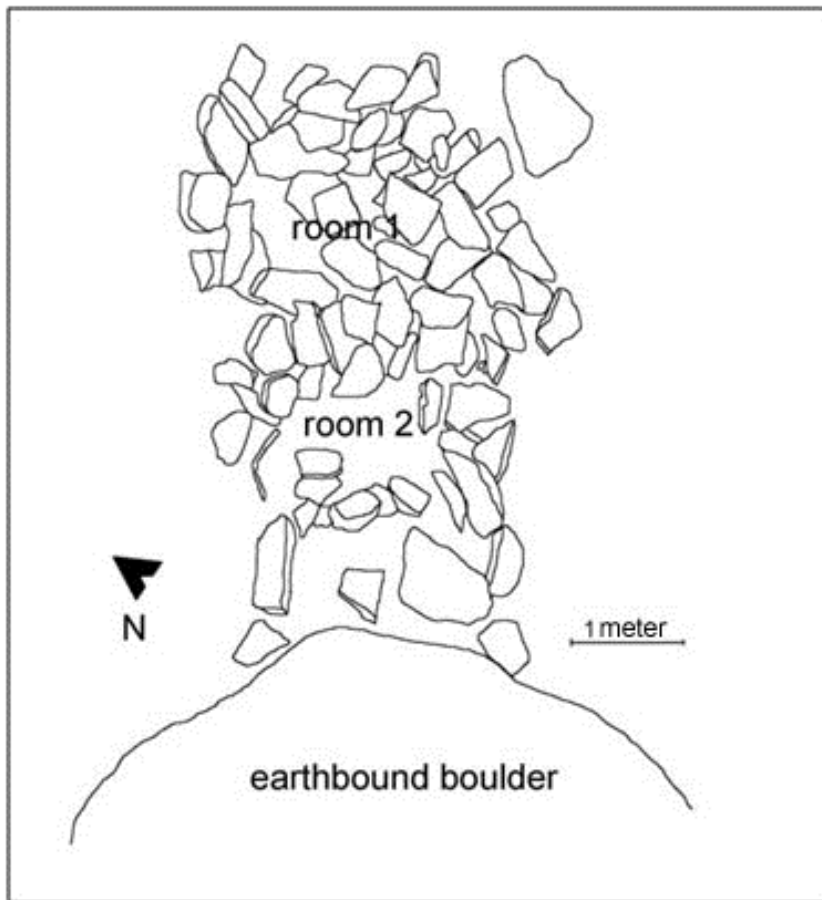


Figure no.10: Sketch of tent house 37N

Structure P: An east facing shooting blind

Length: 2.5m

Position: W 489261 / N 7383744

Photo no: 207 and 208 from W (FL)

Structure Q: An east facing semicircular shooting blind built from 10 stones.

Length: 2.5m

Position: W 489261 / N 7383731

Photo no: 209 from W (FL)

Structure R: An east facing shooting blind built from 6 stones up against bedrock

Position: W 489269 / N 7383706

Photo no: 210 from W (FL)

Structure S: A meat cache by small spring.

Measurements: 1 x 1.5m

Position: W 489249 / N 7383662

Photo no: 211 from S (FL)

Structure T: A northeast facing shooting blind.

Length: 2.6m

Position: W 489241 / N 7383662

Photo no: 212 from SW (FL)

Structure U: An east facing shooting blind.

Length: 2.5 m

Position: W 489225 / N 7383691

Photo no: 213 and 214 from W (FL)

Structure V: An east facing shooting blind.

Length: 3m

Position: W 489196 / N 7383647

Photo no: 215 from W (FL)

Site 38

A northeast facing shooting blind.

Position: W 489094 / N 7383291

Photo no: 216 from SW (FL)

Site 39

This site includes a shooting blind and meat cache.

Structure A: A north facing shooting blind built from head sized and smaller stones including a boulder.

Length: 2m

Position: W 489051 / N 7381826

Photo no: 345 from N (POE)

Structure B: A meat cache containing bones.

Measurements: 2.1 x 1.2m

Position: W 489121 / N 7381977

Photo no: 346 from S, 347 from E and 348 (POE)

Site 40

This small site includes two shooting blinds.

Structure A: A south facing shooting blind built from head sized and smaller stones on a rock outcrop.

Position: W 488901 / N 7381822

Photo no: 147 from N and 148 from S (PKK)

Structure B: A shooting blind built between two boulders.

Position: W 489045 / N 7382137

Photo no: 149 from W (PKK)

Site 41

A shooting blind

Position: W 489845 / N 7381761

Photo no: 150 (PKK)

Site 42

A shooting blind

Position: W 488958 / N 7384575

Photo no: 153 from NE and 154 from SW (PKK)

Site 43

In the area northwest to the lake in the southwestern part of the plateau between Napasorsuaq and Eqalummiut Valley six shooting blinds were mapped.

Structure A: A shooting blind built by placing two head sized and a bigger stone on a boulder.

Position: W 488369 / N 7384306

Photo no: 158 from S and 159 from N (PKK)

Structure B: An east facing (to the lake) shooting blind. Built from three head sized stones placed on a boulder.

Position: W 488587 / N 7383438

Photo no: 355 (POE)

Structure C: A semicircular north facing shooting blind built from 11 head sized stones.

Position: W 488753 / N 7382926

Photo no: 359 from N (POE)

Structure D: A shooting blind built from big stones and head sized stones on the edge of a depression behind a boulder.

Position: W 488720 / N 7382866

Photo no: 160 from N and 161 from S (PKK)

Structure E: A semicircular shooting blind built by placing head sized and bigger stones on three boulders.

Position: W 488770 / N 7382895

Photo no: 360 from N and 361 from NE (POE)

Structure F: A north facing shooting blind

Position: W 488736 / N 7382829

Photo no: 162 from W (PKK)

Site 44

By the north western shore of the lake to the north west of Hudson Camp was situated a big hunter's bed and three cairns.

Structure A: A big hunter's bed made from boulders and having an E-W bearing. The northern wall extends the gable with approximately a meter.

Measurements: 4 x 1.6 m

Position: W 488841 / N 7382629

Photo no: 163 from N and 164 from E (PKK)

Structure B: A marking made by putting a head sized stone upon a boulder.

Photo no: 165 from N (PKK)

Position: W 488617 / N 7382349

Structure C: These two cairns are made by putting a head size stones on each boulder. The boulders are approximately 10m apart.

Photo no: 166 from N (PKK)

Position: W 488539 / N 7382101

Site 45

This site includes two hunters' beds and a pot cooking hearth built by a big rock with markings on top.

Structure A: Hunter's bed under overhang on the northern side of a rock. The outline of the bed made from big stones is rectangular. The rock makes the southern limit of the bed.

Measurements: 2.9 x 1.7m

Position: W 490148 / N 7385951

Photo no: 192 from N, 193 from W (PKK) and 246 (FL)

Structure B: An ephemeral dwelling structure or hunter's bed just to the N of structure A.

Position: W 490164 / N 7385945

No photo taken

Structure C: A pot cooking hearth constructed by placing two stones on southern side of a boulder. The space between the stones makes the fireplace.

Position: W 490140 / N 7385948

Photo no: 194 (PKK)

Site 46

An area comprising many shooting blinds, some caches, a fox trap a cairn and two tent houses.

Structure A: A shooting blind built from three stones put on a boulder.

Position: W 490207 / N 7385114

Photo no: 399 from N and 400 from S (POE)

Structure B: A shooting blind made by placing three stones on a boulder.

Position: W 490162 / N 7385099

Photo no: 401 from N (POE)

Structure C: A collapsed fox trap on a boulder.

Position: W 489576 / N 7385170

Photo no: 195 from S (PKK)



Figure no 11: A pot cooking heath often seen by dwelling structures or hunters beds.

Structure D: A north facing semicircular shooting blind built from head sized and bigger stones.

Position: W 489548 / N 7385270

Photo no: 196 from NE and 197 from S (PKK)

Structure E: A south facing shooting blind built on a big boulder.

Position: W 489593 / N 7385446

Photo no: 261 from N (FL)

Structure F: A west facing shooting blind and built by including two boulders.

Position: W 490230 / N 7385425

Photo no: 247 from E (FL)

Structure G: A west facing shooting blind made from three stones put on top of a boulder.

Position: W 490230 / N 7385401

Photo no: 248 from E (FL)

Structure H: A meat cache that was not opened.

Measurements: 2 x 1.5m

Position: W 490209 / N 7385375

Photo no: 249 from S (FL)



Figure no. 12: A collapsed stone built fox trap structure 46C

Structure I: Another meat cache that was not opened.

Measurements: 1.5 x 0.5m

Position: W 490212 / N 7385379

Photo no: 250 from W (FL)

Structure J: An east facing shooting blind.

Length: 2m

Position: W 490211 / N 7385364

Photo no: 251 from W (FL)

Structure K: Two cairns

Position: W 489945 / N 7385371

Photo no: 252 from S (FL)

Structure L: An east facing shooting blind made by placing two stones on a boulder.

Position: W 489957 / N 7385395

Photo no: 253 from W (FL)

Structure M: Tent house with walls made from big stones. Stones lie deep in the ground.

Measurements: 2.4 x 2.45m

Position: W 489782 / N 7385206

Photo no: 254 from W and 255 from S (FL)

Structure N: An east facing shooting blind

Length: 3m

Position: W 489755 / N 7385192

Photo no: 256 from W (FL)

Structure O: A north facing shooting blind. The blind consists of three stones put upon a boulder.

Position: W 489698 / N 7385250

Photo no: 257 from S (FL)

Structure P: A southwest facing shooting blind built from varying size of stones put on boulder

Position: W 489711 / N 7385287

Photo no: 258 from NE (FL)

Structure Q: An east facing shooting blind.

Position: W 489719 / N 7385300

Photo no: 259 from W (FL)

Structure R: A south facing shooting blind.

Position: W 489682 / N 7385300

Photo no: 260 from N (FL)

Structure S: A tent house shaped as number 8. The house is situated south of a big boulder from big stones and by taking advantage of boulder protruding the ground. The entrance is placed in the middle by a boulder.

Diameter entrance/kitchen niche: 1.6 x 1.5m

Diameter main room: 2 x 1.8m

Position: W 489393 / N 7384913

Photo no: 402 from S, 403 from S and 404 from N (POE)

Structure T: A cache or hunter's bed by structure A.

Position: W 489390 / N 7384915

Photo no. 405 from SE (POE)

Structure U: Two stones on a boulder . probably a shooting blind.

Position: W 489253 / N 7384897

Photo: 257 (FL)

Site 47

This area includes s a number of hunter's beds, a site with tent rings and hearths and a shooting blind.

Structure A: Hunter's bed built into a boulder from spaced stones.

Position: W 487559 / N 7385981

Photo no: 262 from S (FL)

Structure B: Hearth 20 m SE of hunter's bed. A lot of bones are spread out in the area.

Position: W 487571 / N 7385973

Photo no: 263 from S (FL)

Structure C: This structure is a pond surrounded by stones as if it was manmade.

Position: W 487554 / W 735977

Photo no: 264 (FL)

Structure D: East facing shooting blind

Position: W 487550 / N 7385970

Photo no: 265 E (FL)

Structure E: Recent circular tent ring of head sized and bigger spaced stones. This structure is not protected by the conservation act.

Diameter: 4m

Position: W 487581 / N 7385963

Photo no: 266 from N and 267 from S (FL)

Structure F: Recent oval tent ring of spaced mostly bigger than head sized stones. This structure is not protected by the conservation act.

Diameter: 4 x 4.9m

Position: W 487571 / N 7386024

Photo no: 268 from W (FL)

Structure G: Circular recent tent ring made from bigger than head sized spaced stones. This structure is not protected by the conservation act.

Measurements: 3.4 x 3.8m

Position: W 487570 / N 7386016

Photo no: 269 from W (FL)

Structure H: Pot cooking hearth

Position: W 487576 / N 7386172

Photo no: 205 from S (PKK)

Structure I: Little tent ring made from spaced head sized and bigger stones. This structure is not protected by the conservation act.

Diameter: 2m

Position: W 487575 / N 7386174

Photo no: 203 from NW and 204 from SW (PKK)

Site 48

This area includes three cairns and a shooting blind.

Structure A: Cairn

Pos: W 488579 / N 7385628

Photo no.

Structure B: Southwest facing shooting blind built from six stones put on a boulder.

Position: W 488162 / N 7385513

Photo no:?

Structure C: Marking on a boulder made by placing a red head sized stone on it.

Position: W 488108 / N 7385507

Photo no: 200 from S (PKK)

Structure D: Marking on a boulder made by placing a red head sized stone on it.

Position: W 488127 / N 7385493

Photo no: 199 from E (PKK)

Site 49

This area just before the descent to the valley where the site of Napasorsuaq is situated includes a hunter's bed and three shooting blinds.

Structure A: A shooting blind built from big and head sized stones between rock outcrop and a boulder.

Length: 2.8m

Position: W 487824 / N 7386236

Photo no: 410 from S (POE)

Structure B: A semi circular southwest facing shooting blind built partly on a rock outcrop.

Position: W 487807 / N 7386272

Photo no: 201 from NW and 202 from SE (PKK)

Structure C: A hunter's bed

Measurements: 1 x 1m

Position: W 488135 / N 7386758

Photo no. 275 from W (FL)

Structure D: A northeast facing shooting blind in the middle of a plain.

Position: W 487876 / N 7387747

Photo no: 282 from SW (FL)

The sites listed below are already in the GAD:

66V2-0IV-025:

This site includes a meat cache and a tent ring.

Position: 66°31'32.7"N and 51°19'0.52"W

66V2-0IV-031:

This site includes two shooting blinds and a system of cairns.

Position: 66°32'0.49"N and 51°15'3.23"W

66V2-0IV-036:

This site includes a cairn system and two meat caches.

Position: 66°31~~0~~8,35~~+~~N and 51°20~~0~~1,39~~+~~W

66V2-0IV-037:

This site includes a hunter's bed, a cairn and a shooting blind.

Position: 66°21~~0~~40,24~~+~~N and 51°17~~0~~8,16~~+~~W

66V2-0IV-039:

A site with 8 shooting blinds.

Position: 66°32~~0~~10~~+~~N and 51°16~~0~~44,15~~+~~W

66V2-0IV-040:

This site includes four shooting blinds, two caches and a cairn system.

Position: 66°32~~0~~4,31~~+~~N and 51°17~~0~~6,5~~+~~W

66V2-0IV-041:

This site includes two shooting blinds and a cairn system.

Position: 66°32~~0~~28,21~~+~~N and 51°17~~0~~52,26~~+~~W

Concluding remarks on survey of area A

The southern part of the area on the plateau between Napasorsuaq and Eqalummiut Valley is clearly an ancient hunting area where half of the mapped structures are for hunting purposes. A lot of shooting blinds are spread out especially in the southern part of the valley running through the area in an east . west direction. Some drive hunting systems are situated around the lake by which the drilling hut is situated (NE of site 30). Two hunting base camps (site 8 and 10) are situated in the southern part of the area. Few other isolated tent houses are mapped in the northern part of area A.

Some hunter's beds, shelters and caches indicate that the route to the southern and eastern areas runs through this area. Tent rings are a testimony to the more recent use of the area. The tent rings are interpreted as being used for short stays or overnight stays on the route to hunting camps further south and southeast.

It is recommended that the sites 10 and 30 are not disturbed by the planned mining activities. Probably it will be difficult to avoid disturbing some of the hunting structures when making roads or establishing mining facilities in the area south of Hudson Camp. When it comes to choose the exact location of road routing and location of facilities it must be done in close dialogue with the NKA. If disturbance of structures cannot be avoided the NKA will recommend which structures have to be excavated in close dialogue with HR.

Area B**Site 50**

A shooting blind built from 3 big stones against a boulder.

Position: W 487462 / N 7387969

Photo no: 285 from NW (FL)

Site 51

This site includes a tent ring and three shooting blinds.

Structure A: A semicircular west facing shooting blind built from 11 head sized stones.

Position no: W 487333 / N 7888267

Photo no: 286 from E (FL)

Structure B: A semicircular west facing shooting blind built from head sized and bigger stones

Position no: W 487346 / N 7388289

Photo no: 287 from E (FL)

Structure C: A round tent ring made from spaced stones that lie deep in the ground. Stones are missing in eastern part of the outline.

Position no: W 487323 / N 7388318

Photo no: 221 from S (FL)

Structure D: A semicircular west facing shooting blind built in between boulders sticking into the ground.

Position: W 487351 / N 7388270

Photo no: 288 from E (FL)

Site 52

This site named %Napasorsuaq+. meaning the big standing (stone), is mentioned in sources back in the mid 19th century (Aron of Kangeq, 1999 and Jens Kreutzmann, 1997). It is one of the key camp sites in Angujaartorfiup Nunaa and it is situated on one of the main routes to further inland areas. Especially hunting parties from Angujaartorfik heading for Eqalummiut will pass by this site. Napasorsuaq is still in use and is as such part of a %iving tradition+.

The site is situated around the big standing rock on the middle of the ridge crossing a lush valley where at the bottom runs a river connecting the system of lakes. The dwelling structures are clustered close to the rock. Lookouts, hunters' beds, meat caches and graves etc. are spread out in the vicinity.



Figure no.13: The base camp site Napasorsuaq - The Big Standing Rock+seen from north. The scatters of stones seen in front of the rock to the right are the stones making the tent houses of the site.

Structure A: An east facing shooting blind built around a boulder.

Length: 1m

Position: W 485643 / N 7388878

Photo no: 300 from W (FL)

Structure B: A hunter's bed built from head sized and bigger stones on the eastern side of a big rock. The construction includes a boulder.

Measurements: 1 x 2.6m

Position: W 485518 / N 7388634

Photo no: 301 from E (FL)

Structure C: A grave or meat cache. The low oval shaped mound is overgrown by grass and is delimited by spaced head sized stones.

Measurements: 1.6 x 2.5m

Position: W 485398 / N 7388872

Photo no: 302 from W and 303 from SW (FL)

Structure D: A southeast facing lookout built between two big boulders is constructed of big stones and boulders. The lookout has a splendid view over the surrounding area.

Measurements: 1.8 x 2m

Position: W 486515 / N 7388880

Photo no: 304 from S (FL)

Structure E: A lookout situated in a depression in the bedrock. The structure is delimited by one and two courses of slabs and stones.

Measurements: 2 x 1.3m

Position: W 485542 / N 7388898

Photo no: 305 from S (FL)

Structure F: A lookout built on the southern side of a rock. The semicircular wall is built from big stones.

Diameter: 1.6m

Position: W 485870 / N 7389088

Photo no: 306 from W (FL)

Structure G: A pot cooking hearth on the northern side of boulder where structure F is built. The six stones making the hearth is built against the

Photo no: 307 from W (FL)

Structure H: A cache is built from stones between a big boulder and some smaller ones on the eastern side of the big boulder. The cache contains a functioning rifle of caliber 222, which is covered with a piece of red tarp.

Measurements: 1.9 x 0.6m

Position: W 485781 / N 7389274

Photo no: 309 (FL), 229 and 230 (PKK)

Structures I: Two tent rings made from spaced head sized stones. The eastern most ring is divided by a row of stones separating the sleeping and floor area.

Measurements: Western ring: 4 x 3m and eastern ring: 2.8 x 2m

Position: W 485919 / N 7389303

Photo no: western ring: 311 from SW and eastern ring: 312 from SW (FL)

Structure J: A playing area for children\$ on NW side of a big boulder consisting of arrangement of more than fists sized stones.

Position: W 485955 / N 7389300

Photo no: 235 from S, 236 from N (PKK), 213 and 314 (FL)

Structure K: A pile of stones

Diameter: 1m

Position: W 485992 / N 7389361

Photo no: 315 from NE (FL)

Structure L: An oval shaped fireplace for rubbish outlined with stones. It contains rusted tin cans, broken glass, tea light candles and towel etc.

Measurements: 1 x 0,4m

Position: W 485996 / N 7389279

Photo no: 320 from W (FL)

Structure M: The area immediately around the big standing rock is used for cooking places and caches. On the south side several caches contains: plastic kerosene cans, a gas container, clothing, shoes, pots, housekeeping utensils, a thermos, books, tarp, files etc. A clothesline is suspended between the SW-side of the big standing rock and a big boulder some few meters SW of the rock. On the western side are to found: Cooking hearth, slabs and a pile of stones.

Position: W 485981 / N 7389268

Photo no: 316 from E, 317 from S, 318 from W and 319 from NW (FL)

Structures N: The area is the place for the modern tent houses outlined with an oval ring of spaced head sized stones and a rectangular 20 - 30cm deep hollow displaced from the middle of the length of the ring. 5 modern tent houses were identified. Probably this area has been a place for dwellings since the people of the Thule Culture started using Angujaartorfiup Nunaa. Stones and turf used for dwellings structures have been reused over and over again. Probably this is why we did not find prehistoric structures on the site. The actual tent houses probably started being used in the mid 20th century.

The outline of the tent rings is approximately 3 x 4m.

Position: W 485965 / N 7389266

Photo no: 321, 322, 323 and 324 (FL)

Structure O: A dining table and chairs. At the center the table arrangement is a big slab (approx. 1 x 0.6m) supported by stones and surrounded by seven big stones one of which is displaced.

Position: W 485968 / N 7389254

Photo no: 325 from N (FL)



Figure 14: The midden area at Napasorsuaq site

Structure P: A midden area on the southern slope of the ridge is littered with cracked bones. The remains from a blue tent lay on the ground approximately 10m east of the midden.

Measurements: Approximately 4 x 4m

Position: W 485975 / N 7389241

Photo no: 326 from S (FL)

Site 53

Structure A: A hunter's bed on eastern side of a boulder. Few head sized stones delimit the outline of the structure.

Position: W 484838 / N 7393348

Photo no: 337 from E (FL)

Structure B: A semicircular NE facing shooting blind built into southern side of a boulder.

Position: W 484718 / N 7393171

Photo no: 339 from SW (FL)

Structure C: A south facing shooting blind built on a boulder from small head sized stones.

Position: W 484736 / N 7393184

Photo no: 340 from N (FL)

Structure D: A pot cooking hearth built from two head sized and a bigger stone.

Position: W 484649 / N 7392924

Photo no: 341 from N (FL)

Structure E: A small structure made from head sized and smaller stones on southern side of small boulder.

Position: W 484694 / N 7393065

Photo no: 254 from S (PKK)

Structure F: A northeast facing shooting blind.

Position: W 484657 / N 7392925

Photo no: 342 from W (FL)

Structure G: A possible tent ring with few very spaced stones.

Measurements: 2 x 1.8m

Position: W 484552 / N 7392981

Photo no: 344 from SW (FL)

Structure H: A meat cache made from smaller than head sized stones.

Position: W 484488 / N 7392911

Photo no: 449 from NW (POE)

Structure I: A rectangular hunter's bed built into the northern side of an earth bound boulder. The stones making the bed are head sized and bigger.

Measurements: 2.4 x 1.4m

Position: W 484752 / N 7393132

Photo no: 261 from S, 252 and 253 from N (PKK).

Site 54

This southwest facing shooting blind is made by placing two stones on a boulder.

Position: W 484389 / N 7392790

Photo no: 345 from N (FL).

Site 55

This site includes a hunter's bed and a cache built against a cluster of big rocks.

Structure A: A cache on the NW side of the cluster.

Position: W 484082 / N 7392172

Photo no: 257 from NW (PKK)

Structure B: A hunter's bed made from more than head sized stones.

Position: W 484088 / N 7392147

Photo no: 258 and 259 from SE (PKK)

Site 56

A circular arrangement of stones probably formerly used as a lookout structure.

Diameter: 1.5m

Position: W 484384 / N 7391264

Photo no: 347 from S (FL)

Site 57

This small site includes a lookout, a hearth and a cache.

Structure A: An opened cache made from head sized and smaller stones between bedrocks.

Position: W 484343 / N 7391211

Photo no: 261 from NW (PKK)

Structure B: A lookout at ridge built from head sized and bigger stones between some boulders by the bedrock.

Measurements: 1.2 x 1.3m

Position: W 484499 / N 7390474

Photo no: 262 from N and 263 from NE (PKK)

Structure C: A pot cooking hearth built against a boulder.

Position: W 484456 / N 7390096

Photo no: 264

Site 58

A site including a cache and a shooting blind

Structure A: A meat cache on eastern side of boulder

Position: W 485775 / N 7389935

Photo no: 268 (PKK)

Structure B: A meat cache on northeastern side of boulder
 Position: W 485796 / N 7389955
 Photo no: 269 from NE (PKK)



Figure no. 15: A meat cache established on the northern side of a boulder.

Structure C: A hunter's bed built on the SE side of a boulder.
 Measurements: 2 x 0.6m
 Position: W 485787 / N 7389955
 Photo no: 351 from S (FL)

Structure D: A meat cache on the northern side of a big boulder
 Position: W 485738 / N 7390087
 Photo no: 456 from N and 458 from S (POE)

Structure E: A hunter's bed probably reused as a cache. Build from head sized and bigger stones.
 Measurements: 2 x 0.9m
 Position: W 485642 / N 7390172
 Photo no: 280 from W (PKK)

Structure F: A north east facing shooting blind made from four stones.

Position: W 485683 / N 7390193

Photo no: 459 from NE (POE)

Structure G: A hunter's bed built between two boulders.

Measurements: 2.2 x 1.2m

Position: W 484663 / N 7391824

Photo no: 281 from W (PKK)

Site 59

This site includes a hunter's bed a shooting blind and a cache.

Structure A: A hunter's bed built on the northern side of a boulder from head sized and bigger stones. The structure is disturbed.

Measurements: 2 x 0.5m

Position: W 485154 / N 7390985

Photo no: 353 from N (FL)

Structure B: A shooting blind built on the same boulder as in structure A by placing three stones in a row. Probably originally built from four stones as one stone seems to be displaced.

Position: W 485154 / N 7390985

Photo no: 353 from N (FL)

Structure C: A meat cache built from head sized stones on the western side of a boulder.

Position: W 485092 / N 7391085

Photo no: 354 from W (FL)

Site 60

A site for overnight stays on the route between hunting base camps in the inland and fjord coast comprising four hunter's beds, three pot cooking hearths and a shooting blind.

Structure A: A hunter's bed on northern side of a boulder that has been reused as a cache or made into a smaller bed.

Measurements: 2.5 x 2.5m

Position: W 484484 / N 7392511

Photo no: 274 from N, 275 and 276 from W (PKK)

Structure B: A pot cooking hearth built on the northern side of same boulder as in structure A.

Position: W 484485 / N 7392494

Photo no: 277 from S (PKK)

Structure C: A pot cooking hearth on northern side of boulder

Position: W 484571 / N 7392511

Photo no: 463 from N (POE)

Structure D: A hunter's bed on northern side of same boulder as in structure A.

Measurements: 2.3 x 1.4m

Position: W 484488 / N 7391294

Photo no: 464 (POE)

Structure E: A hunter's bed built on southwestern side of a boulder. Build from big stones.

Measurements: 2.8 x 1.4m

Position: W 484574 / N 7392506

Photo no: 465 from SW (POE)

Structure F: A semicircular hunter's bed built on western side of three boulders. Stones lay deep in the ground.

Measurements: 2 x 1.2m

Position: W 484596 / N 7392636

Photo no: 278 from W (PKK)

Structure G: A pot cooking hearth built into a small boulder from two head sized stones placed paralleled into the boulder. To the southern stone is built a windscreen from one big and two smaller stones.

Position: W 484601 / N 7392645

Photo no: 466 from W (POE)

Structure H: A northwest facing semicircular shooting blind built from head sized and bigger stones.

Length: 1m

Position: W 484574/ N 7392509

Photo no: 460 from SE (POE)

Site 61 can be found in the description of area C

Site 62

A meat cache built from head sized and smaller stones between two boulders.

Position: W 484647 / N 7392768

Photo no: 358 from E (FL)

Site 63

A site with tent ring and meat cache

Structure A: A tent ring made from head sized stones. The rings are disturbed and a scatter of stones and bones is spread over the area inside and outside the ring.

Position: W 484779 / N 7392021

Photo no: 355 from W (FL)

Structure B: A semicircular cache built from smaller than head sized stones on the eastern side of boulder that is marked by placing a stone on the top.

Position: W 484733 / N 7392221

Photo no: 356 (FL)

Concluding remarks on area B

The archeological structures in this area are more dispersed compared to the two other areas included in this survey which makes the probability for not disturbing the structures more likely when leading the road through the area. Half of the mapped structures in this area include hunter's beds, hearths and caches which bear witness to the use of the area for overnight stays on the route to and from the interior hunting sites of Angujaartorfiup Nunaa. The most important site in this area is clearly site 52, the site of Napasorsuaq. It is strongly recommended that this site should not be disturbed and that the road routing runs clear of the site to the east.

Area C

Site 61

The site is named Ujarasussuaraq meaning the little big rock and is listed in the GAD with the number 66V2-0IV-73. The campsite is spread around a big the rock. The site is still being used in the hunting season for caribou by people from Kangaamiut, and is as such part of a living tradition. Interviews made with elders from Kangaamiut, who according to the tradition in the region have spent many of their childhood summers in caribou hunting camps in Angujaartorfiup Nunaa, mention this site as the first resting place on the main route from Angujaartorfiup to the further inland (Goliathsen and K. Lyberth, 2002). The site is also on the map made by Jens Kreutzmann (1997) in the mid 19th century.

Structures A - H are situated in the area west to the Ujarasussuaraq site - an area with several cairns and shelters. Structures I - R are the makes the site clustered immediately around Ujarasussuaraq.

Structure A: Two small piles of stones may be playing structures.

Position: W 486597 / N 7395345

Photo no: 363 from S (FL)

Structure B: A conic cairn built of many stones upon a boulder at the top of a ridge.

Position: W 486428 / N 7395416

Photo no: 364 from S (FL)

Structure C: A cairn built from many stones upon a boulder situated on a ridge west of Ujarasussuaraq. On the eastern side of the boulder some stones remain from a former non-identifiable structure.

Position: W 486489 / N 7395407

Photo no: 365 from S (FL)

Structure D: A cairn built of a pile of stone slabs on the edge of a narrow rock outcrop.

Position: W 486510 / N 7395411

Photo no: 366 from NW (FL)



Figure no.16: The site of Ujarasussuaraq (66V2-0IV-73) - 'The Little Big Rock'. Just to the right of the rock has been erected a kind of cabin. The dwelling structures and drying racks are situated to the right in the photo.

Structure E: A hunter's bed built into an east facing rock wall. A boulder makes the northern wall of the bed and two big stones the southern.

Measurements: 2 x 1.5m

Position: W 486608 / N 7395463

Photo no: 369 from E (FL)

Structure F: A shelter and a hunter's bed below a group of boulders.

Position: W 486633 / N 7395476

Photo no: 371 + 372 shelter from W and 373 hunter's bed from S (FL)

Structure G: A shelter situated below the overhang of a boulder.

Position: W 486953 / N 7395499

Photo no: 374 from S (FL)

Structure H: A circular dwelling structure. The stones making the structure have sunken deep in the ground.

Measurements: 2 x 2.5m

Position: W 486690 / N 7395535

Photo no: 375 from W (FL)

Structure I: A pot cooking hearth made by placing two head sized stones on the eastern side of a boulder.

Position: W 486734 / N 7395509

Photo no: 376 from SE (FL)

Structure J: A tent house structure of the most recent type. Circular ring of spaced head sized stones. The circular area is a little bit raised from the surrounding area. A quadrangular area displaced to the east from the middle of the structure is 20 . 30cm lower than the rest of the structure and is paved with stones. From the entrance to the east is a trodden path. Two meters north of the structure is a pot-cooking hearth built on the eastern side of a boulder.

Measurements: 4 x 4.3m

Position: W 486750 / N 7395476

Photo no: 377 from E (FL)

Structure K: Between the bedrock to the northern area of the site and the scrub is the northeastern midden area where broken bones are spread out.

Position: W 486756 / N 7395463

Photo no: 378 from E (FL)

Structure L: Between the bedrock to the north area of the site and the scrub is the southwestern midden area where broken bones tin cans plastic etc. are spread out.

Position: W 486755 / N 7395449

Photo no: 379 from W (FL)

Structure M: A collapsed meat drying structure made from green nylon fishing nets hitched to head sized stones and supported by wooden poles.

Measurements: 7 x 4m

Position: W 486748 / N 7395445

Photo no: 380 from N (FL)

Structure N: A collapsed meat drying structure made from green nylon fishing nets hitched to head sized stones and supported by wooden poles.

Measurements: 5 x 3m

Position: W 486742 / N 7395449

Photo no: 381 from N (FL)

Structure O: An arrangement of table and chairs made from stones. The table is a big slab supported by stone and the chairs consists of big stones. One chair is put together of two stones.

Position: W 486740 / N 7395442

Photo no: 382 from E (FL).



Figure no.17: An arrangement of a big slab and stones making table and chairs.

Structure P: A hut with pitched roof made from sheets of wood and tarp. The frame of the hut is covered with sheets of wood protected with tarp and secured to the ground by a row of head sized and bigger stones. The roof and the three-sided end wall to the south are not covered with tarp. The middle bay on roof of the three-sided end wall has two windows. The hut has a chimney of sheet metal on the western side of the roof near to the northern end wall.

Measurements: 3.5 x 3m and high from rooftop to the ground: 1.83m

Position: W 486741 / N 7395440

Photo no: 383 from W 384 from N 385 from E and 386 from S (FL)

Structure Q: A tent house of the most recent type consisting of an oval ring of spaced head sized stones. The countersink in the northwestern part of the structure is approximately 30 cm deep and is edged with slabs and paved with stones. The whole structure is encircled with rather spaced head sized stones probably for hitching the guy lines.

Measurements: 3.3 x 4.8m

Position: W 486740 / N 7395429

Photo no: 389 from NE (FL)

Structure R: Ujarasussuaraq has three pot cooking hearths placed on the southern, eastern and northern sides.

Position: W 486730 / N 7395421

Photo no: 416 and 417 from S, 418 from E and 419 from NE (FL)

Site 64

A hunter's bed made from head sized and bigger stones arranged in a horseshoe shape.

Measurements: 1.9 x 1.2m

Position: W 484562 / N 7392527

Photo no: 461 from E and 462 from W (POE)

Site 65

A west facing shooting blind built between two boulders.

Position: W 486531 / N 7396172

Photo no: 391 from E (FL)

Site 66

Structure A: A south facing shooting blind made by putting a boulder a head sized and a smaller stone together.

Position: W 486438 / N 7396298

Photo no: 395 from N (FL)

Structure B: A west facing shooting blind made from 10 head sized stones. The blind is situated in willow scrub and for that reason hardly visible.

Position: 2m east of A

Photo no: 396 from E (FL)

Site 67

A shooting blind made by putting a head sized stone together with a boulder.

Position: W 486305 / N 7396377

Photo no: 400 from N (FL)

Site 68

An area on a plateau north of the site of Ujarasussuaraq with structures from overnight stays including cooking places and caches.

Structure A: A recent construction of head sized and smaller stones marking the route both to the fjord coast and the inland. This structure is not a protected by the conservation act.

Position: W 486299 / N 7395888

Photo no: 403 from east and 408 from E (FL)

Structure B: A disturbed meat cache built from head sized and smaller stones including two boulders.

Position: W 486304 / N 7395896

Photo no: 404 from N and 408 from E (FL)

Structure C: A pot cooking heath built from three bigger than head sized stones.

Position: W 486303 / N 7395897

Photo no: 405 from W (FL)

Structure D: A pot cooking hearth made from two more than head sized stones placed paralleled with approximately 0,2m gap into the NW side of a boulder.

Position: W 486309 / N 7395898

Photo no: 406 from NW (FL)

Structure E: A quadrangular structure probably a hunter's bed built from head sized and bigger stones

Measurements: 1.5 x 1.1m

Position: W 486289 / N 7395871

Photo no: 409 from east (FL)

Structure F: Circular dwelling structure made from boulder and more than head sized stones.

Diameter: 2.2m

Position: W 486295 / N 7395865

Photo no: 410 from S and 411 from N (FL)

Structure G: Meat cache with musk ox bone in it built on western side of a boulder from bigger than head sized bones.

Position: Not taken

Photo no: 412 from W (FL)

Structure H: A semicircular tent ring made from spaced stones that now lie deep in the ground. The western part of the structure is rounded and the eastern end straight. This structure is not protected by the Greenland conservation act.

Diameter: 3.3 x 3.7m

Position: W 486368 / N 7395847

Photo no: 420 from E (FL)

Structure I: A hunter's bed on eastern side of a boulder built from head sized and bigger stones. Some of the stones are displaced.

Measurements: 1.3 x 8.8m

Position: W 486393 / N 7395839

Photo no: 421 from W (FL)

Structure J: A small shelter between two boulders where the space between them is closed with stone on the eastern side. The southernmost boulder is marked with two stones.

Position: W 486447 / N 7395792

Photo no: 305 from NW and 306 from E (PKK)

Structure K: A semicircular hunter's bed under the overhang on the eastern side of a big boulder.

Position: W 486463 / N 7395762

Photo no: 422 from E

Structure L: A semicircular hunter's bed built from head sized stones against a boulder. Part of the bed is quit overgrown and with Salix willows.

Position: W 486462 / N 7395763

Photo no: 423 from N (FL)

Site 69

The area from Ujarasussuaraq to Angujaartorfik following the southwestern side of the Angujaartorfik River was, except from a single cache mapped, under one site number. The area is situated at the beginning of the route from the coast to the inland. According to traditional knowledge (K. Lyberth & Rosing, 2002), the route has been used by many generations of caribou hunters. The path is still visible and certain locations are related to certain customs. E.g.: At a certain place the returning hunters used to fire their guns to warn the people in the Angujaartorfik camp of the good or bad outcome of the long stay in the interior. A stop over was taken at a certain place to catch the last chars for the journey. Pauses for making tea and food were held at certain prescribed locations. On this route certain tales or events have taken place and were recounted on the journey (Berthelsen, 2003). In short this area, including Angujaartorfik has a significant historical and ethnographical value for the people of West Greenland and for the history of Greenland in general.

Structure A: A circular ring of head sized stones.

Diameter: 1m

Position: W 485989 / N 7395877

Photo no: 430 from W (FL)

Structure B: A recent double tent ring. The inner ring is made from smaller than head sized spaced stones arranged as an oval. The outer ring is made from head sized fewer and more spaced stones.

Measurements on outer ring: 3.2 x 4 m

Position: W 486006 / N 7396093

Photo no: 487 from W (POE)

Structure C: A meat cache built from bigger than head sized on northern side of a boulder.

Position: W 486005 / N 7396111

Photo no: 482 from N (POE)

Structure D: An opened meat cache built from head sized stones between some protruding stones.

Position: W 485910 / N 7396240

Photo no: 483 from E (POE)

Structure E: A circular tent ring made from spaced head sized and smaller stones. Some of the stones are relocated.

Diameter: 3.7 . 4m

Position: W 485747 / N 7396292

Photo no: 484 from W (POE)

Structure F: A recent oval tent ring made from spaced head sized and smaller stones.

Measurements: 3.1 x 2.2m

Position: W 485685 / N 7396325

Photo no: 485 from NW (POE)

Structure G: A pot cooking hearth made from three head sized stones

Position: W 485660 / N 7396331

Photo no: 486 from E (POE)

Structure H: An oval tent ring made from some rather spaced smaller than head sized stones.

Measurements: 2.5 x 3.7m

Position: W 485656 / N 7396326

Photo no: 487 from SE (POE)

Structure I: A pot cooking hearth made from three head sized stones.

Position: W 485550 / N 7396439

Photo no: 488 from NW (POE)

Structure J: A circular meat cache made from head sized stones arranged on the edge of hollow in the ground.

Diameter: 1.3m

Position: W 485244 / N 7396711

Photo no: 489 from N (POE)

Structure K: Another circular meat cache made from head sized stones arranged on the edge of hollow in the ground.

Diameter: 1.3m

Position: W 485218 / N 7396774

Photo no: 490 and 491 from W (POE)

Structure L: A meat cache built from head sized and bigger stones on northwestern side of a boulder. The stones are arranged around a hollow in the ground.

Measurements: 0.8 x 1.3m

Position: W 485047/ N 7396875

Photo no: 492 from W (POE)

Structure M: A little round recent hearth made from head sized and smaller stones.

Position: W 484314 / N 7397273

Photo no: 493 from W (POE)

Structure N: A recent pot cooking hearth made from two head sized stones placed against the western side of a boulder.

Position: W 484317 / N 7397270

Photo no: 494 from W (POE)

Structure O: A big, circular and recent tent ring made from spaced head sized stones.

This is the site of Qaattorfik. At this location on the trek to the inland hunting areas it was a tradition to fish for Arctic Char for provisions on the route to hunting camps. The tradition tells that a fishing spear for everybody's use where at the place in the old days.

Diameter: 6.2 . 5.5m

Position: W 484317 / N 7397270

Photo no: 495 from NW (POE)

Structure P: A pot cooking hearth.

Position: W 484265 / N 7397295

Structure Q: A quadrangular tent ring with a pot-cooking hearth at the western side. The ring is made from head sized and smaller stones.

Measurements: 3.1 x 3.3m

Position: W 483669 / N 7397627

Photo no: 498 from E and pot cooking heart: 497 from W (POE)

Structure R: A big rock with many names scratched into the layer of lichen covering part of rock.

Position: Missing

Photo no: 499 from W (POE)

Structure S: A shelter below the overhang on western side of a big boulder. The shelter is delimited to the south by another smaller boulder supporting the big boulder. To the north a wall is constructed from head sized stones.

Position: W 483282 / N 7397871

Photo no: 500 from W (POE)



Figure no.18: Shelter under the overhang of a big boulder.

Site 70

A meat cache built from head sized and bigger stones on eastern side of a boulder.

Measurements: 0.6 x 0.6m

Position: W 485523 / N 7395894

Photo no: 431 from E (FL)

Site 71 This site has number 66V2-0IV-178 in the ancient monuments register of Greenland. The site includes four graves and a fox trap

Structure A: A big grave made of stones between some boulders situated approximately 18m above sea level.

Position: W 480487 / N 7398541

Photo no: 502 from E (POE)



Figure no. 19: A grave west of Angujaartorfik camp site.

Structure B: A fox trap built upon a big rock.

Position: W 480505 / N 7398500

Photo no: 442 from NW (FL)

Structure C: A rectangular grave built from stones.

Position: W 480483 / N 7398519

Photo no: 447 from N (FL)

Structure D: A rectangular grave with cover stones of slabs removed.

Position: W 480483 / N 7398519

Photo no: 448 from NW (FL)

Structure E: An almost round grave built of stones.

Position: W 480483 / N 7398519

Photo no: 449 from N (FL)

Site 72

This site includes a shelter two graves two meat caches and a fox trap

Structure A: An unidentified structure consisting of a small pile of stones. Part of the structure might have eroded into the sea.

Position: W 480365 / N 7398556

Photo no: 444 from W (FL)

Structure B: A shelter in a cavity beneath a boulder supported by two other boulders. A low wall the built from stones at the front of the shelter

Position: W 480334 / N 7398561

Photo no: 443 from SE (FL)

Structure C: A rectangular grave built against the bedrock as a chamber. The grave was opened as one slap covering the grave was removed.

Position: W 480307 / N 7398565

Photo no: 450 from S and 451 from W (FL)

Structure D: A big oval shaped grave covered with many stones. The grave is undisturbed opened.

Position: W 480299 / N 7398550

Photo no: 452 from W (FL)

Structure E: A fox trap built on bedrock. The cover stones are removed.

Position: W 480292 / N 7398552

Photo no: 453 from W (FL)

Structure F: A meat cache made as a semicircular arrangement of head sized and bigger stones on northern side of a big boulder.

Position: W 480261 / N 7398538

Photo no: 307 from W (PKK)

Structure G: A meat cache on eastern side of the same boulder as structure A.

Position: W 480261 / N 7398538

Photo no: 308 from E (PKK)

Structure H: A fox trap built on a boulder. Cover stones removed and a wire mess is put in the structure. May is has been used as a grill in recent times.

Position: W 480254 / N 7398560

Photo no: 454 from N (FL)

Site 73

A disturbed fox trap

Position: W 479757 / N 7398561

Photo no: 455 from W (FL)

Site 74

A site with three fox traps.

Structure A: Disturbed fox trap

Position: W 478851 / N 7378626

Photo no: 456 from E (FL)

Structure B: Disturbed fox trap

Position: W 478851 / N 7378626

Photo no:

Structure C: Fox trap built on a boulder.

Position: W 478862 / N 7398616

Photo no: 310 from S (PKK)

Site 75

This site is named %Uppatai Toqungasup Umiivii+meaning %The landing place of the one with the dead thighs+has number 66V2-0IV-097 in the Greenland Antiquities Database. The site includes a tent ring and an unidentified structure.

Structure A: Tent ring to the eastern side of the creek.

Diameter: 4 . 3.6m

Position: W 478299 / N 7398639

Photo no: 350 from SE from (PKK)

Structure B: Round wall structure made from stones from stones of different size. The structure could be a cache.

Diameter: 1.5m

Position: Just to the opposite side of the creek from structure A

Photo no: 351 from S (PKK)

The site of Angujaartorfik

At the head of the fjord of Angujaartorfik is situated a hunting camp site divided into two main camp sites. The eastern campsite is situated just west of the river on the western shore of a lagoon. The site is listed with number 66V2-0IV-004 in the GAD.

One camp site is situated in the western part of the head of the fjord (site number 66V2-0IV-088 in the Greenland Antiquities Database). According to Andreas Lyberth (2002) the western most camp site was only taken in use in the early 1950ies. This site is situated just by and partly upon an ancient campsite from the Saqqaq Culture (Listed under same number in GAD as the modern site).

The eastern camp site is considered to be the traditional place for gathering and for placing the large skin boats on land. The site of Angujaartorfik was a central gathering place for hunting parties using Angujaartorfiup Nunaa and the adjacent areas (Berthelsen, 2003/04 &

Petersen, 1992). The kayaks were brought into interior hunting territories as they were important part of the hunting equipment e.g. when driving caribous into lakes. They were also used for transportation on lakes in addition to crossing rivers and lakes.

At the end of the hunting season the parties gathered and days with full bags from the hunt were spent at the site preparing for the journey out to the coast. According to Goliathsen (2002) these were days with plenty of people, joy, music dancing and competitions. Football was played on top of the bluff.

The site is also known from written sources from the middle of the 19th century (Aron of Kangeq, 1999 and Kreutzmann, 1997) but is probably of much older age. Likewise Napasorsuaq and Ujarasussuaraq this site has probably been used for hundreds of years by the Inuit of the Thule Culture and their descendants. As showed on maps numbers 6 to 8 more than hundred structures are mapped at Angujaartorfik using DGPS. Some of the structures were barely visible on the surface.

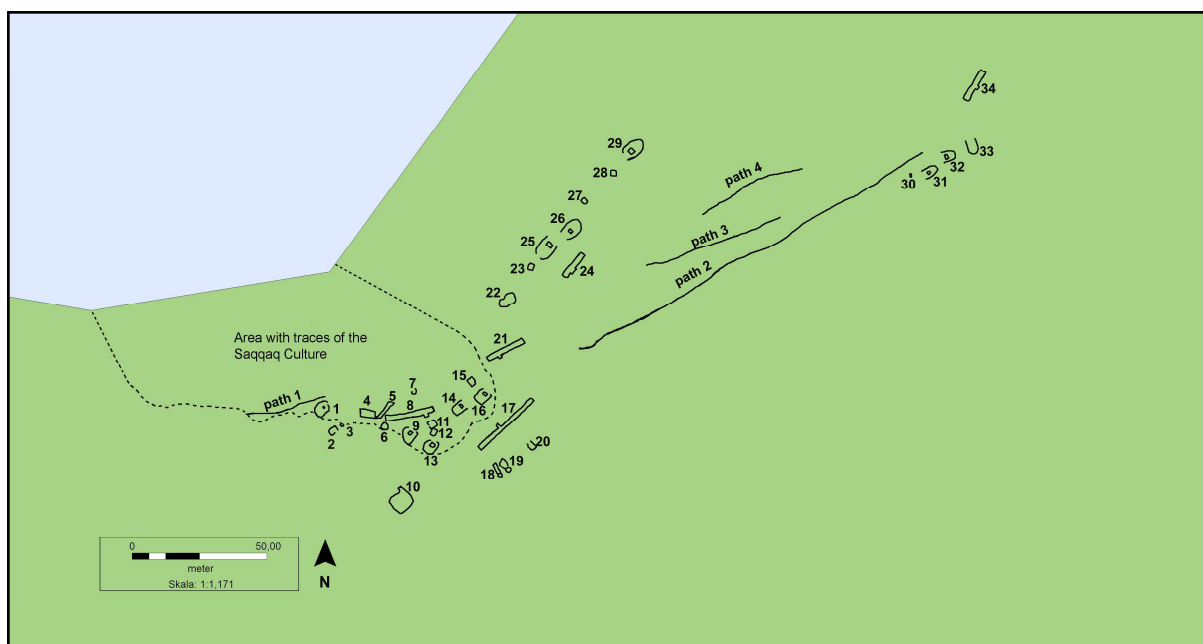
The hunting in the Angujaartorfik area and its vicinity has increased as the traditional summer hunt for caribou, which usually took place spread out in the Angujaartorfiup Nunaa has been concentrated to this area and its vicinity. This concentration was facilitated by an explosive increase of the musk ox population. The possibilities for musk ox hunting have also attracted hunters from as far away as Nuuk and areas north of Sisimiut.

The site is also used by the tourist industry. Tourists are brought to the site for trophy hunting musk oxen and for fishing char in the river.

List of structures at the western part of Angujaartorfik

The site is listed with the number 66V2-0IV-088 in GAD. The site comprises an actively used summer camp and cultural layers from the Saqqaq culture.

Struct no.	Type of structure
1	Tent house of most recent type
2	Small outbuilding probably for storing food
3	Double pot-cooking hearth with a low stone wall for wind protection
4	Drying rack for meat
5	Drying rack for meat
6	Wooden table surrounded by four benches
7	Pot-cooking hearth surrounded by two horseshoe shaped low walls for wind protection
8	Drying rack for meat
9	Tent house most recent type
10	Cabin made from wood
11	Wooden table surrounded by benches
12	Wooden table with two benches
13	Tent house of the most recent type
14	Big tent house of the most recent type



Map no. 6: Overview plan of the structures making the western part of Angujaartorfik base camp site. The dotted line encircles part of the site containing cultural layers and finds from the Saqqaq Culture. Both phases of the site are listed under the number 66V2-0IV-088 in the Greenland Antiquities Database.

- | | |
|------|--|
| 15 | Wooden table with two benches |
| 16 | Tent house of the most recent type |
| 17 | Drying rack for meat |
| 18 | Smoker for Arctic Char |
| 19 | Smoker for Arctic Char |
| 20 | Restroom made from wooden poles and tarp |
| 21 | Drying rack for meat |
| 22 | 8-spahed depression probably from a former tent house, interior of structure overgrown with Lyme Grass |
| 23 | Wooden table and two benches |
| 24 | Drying rack for meat |
| 25 | Big tent house of the most recent type |
| 26 | Big tent house of the most recent type |
| 27 | Restroom made from wooden poles and tarp |
| 28 | Depression of same type used in most recent tent houses |
| 29 | Tent house of the most recent type |
| 30 | Double pot-cooking hearth |
| 31 | Big tent house of the most recent type |
| 32 | Big tent house of the most recent type |
| 33 | Big tent house of the most recent type |
| 34 | Drying rack for meat made from wooden poles and yellow nets |
| ---- | Area with cultural layers from the Saqqaq Culture |



Map no. 7 : Overview of structures on the eastern part of Angujaartorfik camp site

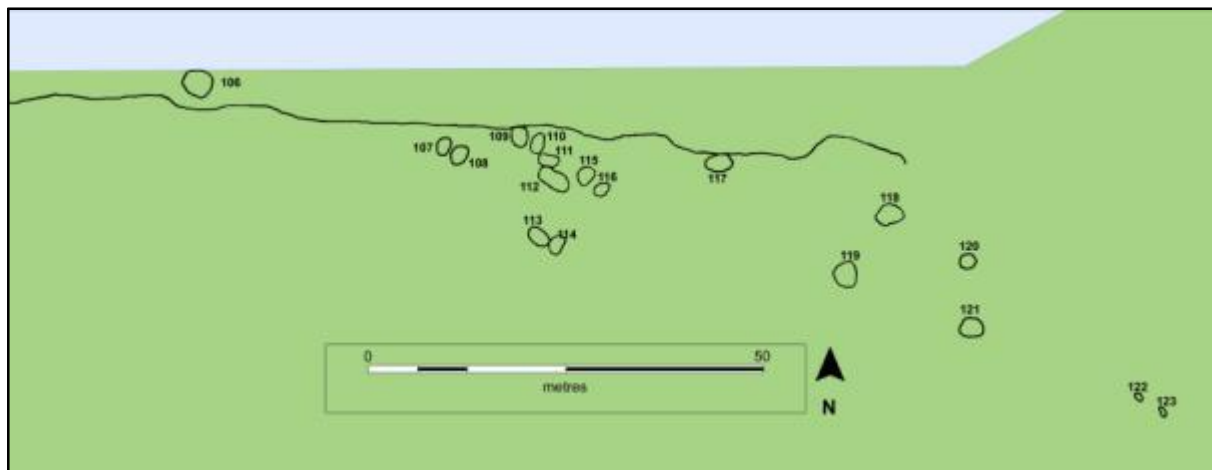
List of structures at the eastern part of Angujaartorfik

This campsite is listed in the GAD with the numbers 66V2-0IV-004. The camp site is still actively used and seems to be at least several hundred years old. Especially the northern part of the site which is being eroded by the river and sea has traces of older structures barely visible in the ground. The eroding slope by the lagoon contains bones and fragments of worked bones in depths of more than a meter.

Struct no.	Type of structure
35	Tent house of the most recent type
36	Tent ring
37	Tent ring
38	Probably an old tent house
39	Probably one or more old tent houses overgrown with Lyme Grass
40	A small rectangular structure
41	Probably an old tent house

- 42 Round depression, probably a former tent house where the stones in the structure has been reused in one or some of the newer structures
- 43 Ephemeral depression probably from an earlier tent house structure
- 44 A small round depression probably from an earlier structure where the stones has been reused
- 45 Small round depression probably from an earlier structure where the stones has been reused
- 46 Drying rack for meat
- 47 Hearth
- 48 Hearth
- 49 Tent ring
- 50 Hearth
- 51 Grave
- 52 Hearth
- 53 Tent ring
- 54 Cache
- 55 Grave
- 56 Grave
- 57 Grave
- 58 Grave
- 59 Hearth
- 60 Hearth
- 61 Excavated hole
- 62 Hearth
- 63 Hearth
- 64 Hearth
- 65 Two pot-cooking hearths with a horseshoe shaped windscreen
- 66 Tent house of the most type
- 67 Two caches
- 68 Smoker for Arctic Char
- 69 Hole made for deposit of waste
- 70 Hole made for deposit of waste
- 71 Horseshoe shaped tent ring with a marking of the sleeping platform. The stones making the structure are barely visible in the vegetation of grass.
- 72 Outhouse
- 73 Outhouse
- 74 Double pot-cooking hearth surrounded by a horseshoe shaped windscreen built from stones
- 75 Stones arranged as a table and four chairs
- 76 double pot-cooking hearth built into a boulder. A small windscreen is built from stones to the western side
- 77 Tent house of the modern type
- 78 Wooden table without legs and two trunks of wood used as benches
- 79 Tent house of the modern type with a cooking niche at the entrance area
- 80 Restroom made from poles and tarp

List of structures on the eastern most area of Angujaartorfik



Map no.8: Plan over eastern most part of Angujaartorfik with graves.

Struct no.	Type of structure
81	Drying rack for meat
82	Drying rack for meat
83	Drying rack for meat
84	Outhouse
85	Hearth
86	Tent house of the most recent type
87	Drying rack for meat
88	Tent house of the most recent type
89	Hearth
90	Hearth
91	Tent house of the most recent type
92	Hearth
93	Drying rack for meat
94	Tent house of the most recent type
95	Drying rack for meat
96	Drying rack for meat
97	Drying rack for meat
98	Drying rack for meat
99	Hearth
100	Tent house of the most type
101	Drying rack for meat
102	Tent house of the most recent type
103	Tent house of the most recent type
104	Table and bench made from wood
105	Hearth
106	Grave
107	Grave with an artifact of whalebone placed on top
108	Grave

109	Grave
110	Grave
111	Grave
112	Double grave
113	Grave
114	Grave
115	Grave
116	Grave
117	Playground with arrangements of small stones
118	Grave with a wooden cross
119	Grave
120	Unidentified structure made from stones, probably a cache
121	Grave
123	Structure made from stones probably a cache
122	Structure made from stones probably a cache
Path 8	Path from river to the oldest part of the campsite
Path 9	Path to the area with graves

Sites in the survey area known from earlier and listed in GAD:

66V2-0IV-072:

This site includes a tent ring which is not protected by the Greenland conservation act.

Position: 66°40'18,55"N and 51°17'24,65"W

66V2-0IV-074:

This site includes two tent rings which are not protected by the Greenland conservation act .

Position: 66°40'45,73"N and 51°18'46,37"W

66V2-0IV-087:

This site includes a tent ring which is not protected by the conservation act.

Position: 66°42'4,86"N and 51°23'53,52"W

66V2-0IV-093:

This site includes a tent ring and a meat cache. The tent ring is not protected by the conservation act.

Position: 66°40'57,04"N and 51°19'6,71"W

Concluding remarks on the description of area C

This area has a significant value for Greenland's history and prehistory. The area from Ujarasussuaq along the southwestern bank of the Angujaartorfiup Kuua is a historically significant area still being actively used as a continuation of the prehistoric Inuit tradition. Knowledge of the traditional use of the area and knowledge concerning locations still exists. It is urgent that this knowledge is documented preferably with video recordings before greater changes alter the area and its vicinity.

Compared with the two other areas in the actual survey campaign this area is dominated by base camp dwelling structures and other structures related to a base camp. E.g.: Hearths, drying racks, graves. This does not mean that hunting has been not going on here. Hunting structures are just not found in any significant numbers in the dwelling areas and in areas with more intensively used routes. In addition to this the hunting of today does not use hunting structures.

The site of Angujaartorfik and the area on the southeastern bank of Angujaartorfiup Kuua is a potential candidate for a world heritage list nomination in the future.

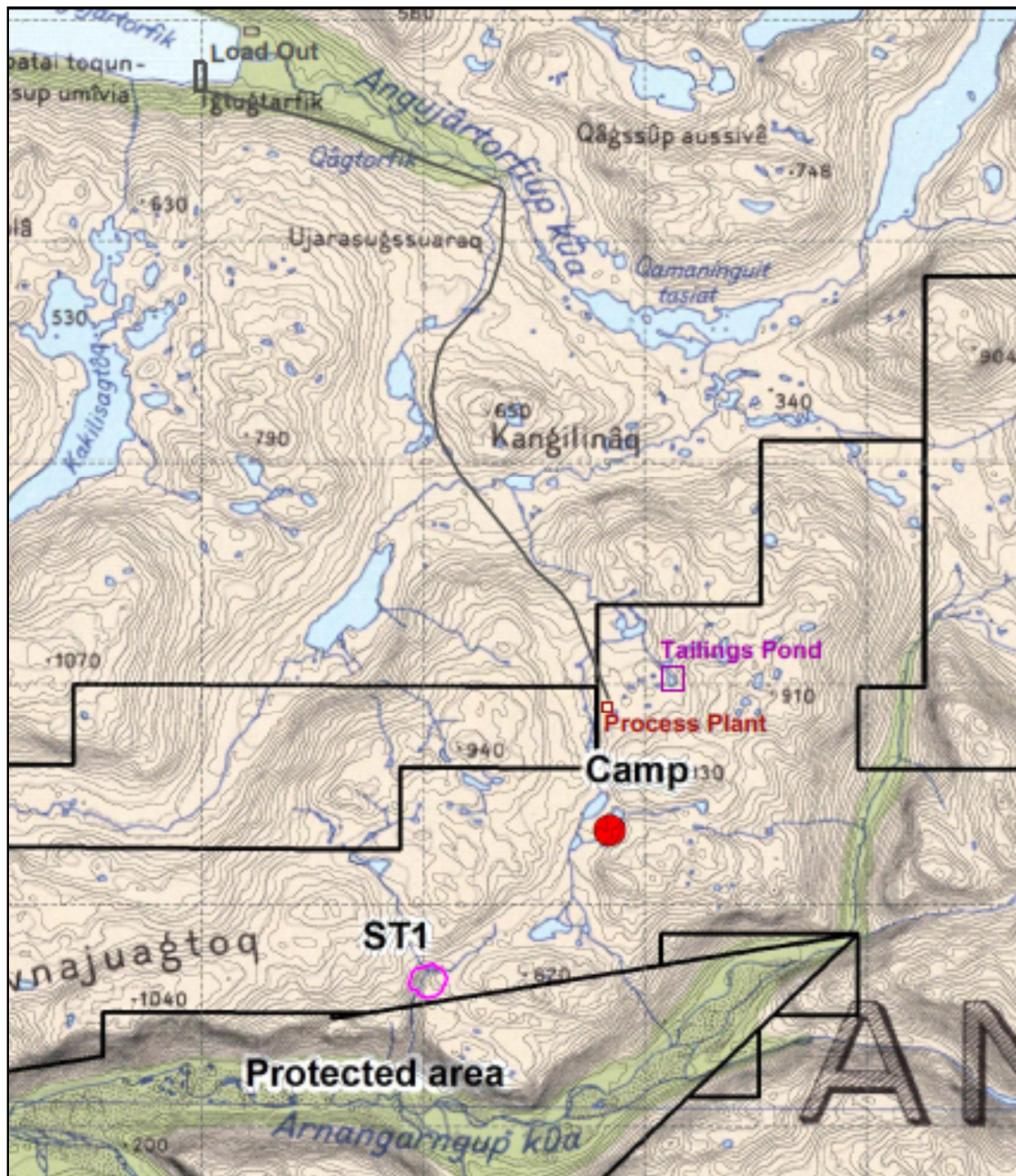
After a dialogue with HR in connection with preparation of the archival studies in the spring of 2012 HR announced the possibility of altering the routing of the road for a part of the routing in area A and to relocate the harbor (map no.11 page 73). If these alternatives could be adjusted to the original plan, disturbance of the Angujaartorfik site and the south west bank of Angujaartorfiup Kuua could be avoided. The alternative road routing runs higher up along the hill side and will avoid conflicts with historically significant areas containing important sites, locations and structures. In the area for the alternate road routing no structures were mapped. If harbor facilities are moved further out toward the fjord coast of Angujaartorfik it will make lesser impact on the significant cultural landscape.

NKA strongly suggests an adjustment of the road routing and the relocation of the harbor facilities according to the outlined alternatives in map. no. 11 in case of realization of the mining plans. The alternate plan will make lesser impact on the significant heritage areas which have the potential for an UNESCO World Heritage nomination. The alternate road routing and the relocation of the harbor facilities will also spare expensive archaeological excavations and make a lesser impact on the amenity value of the significant heritage sites.

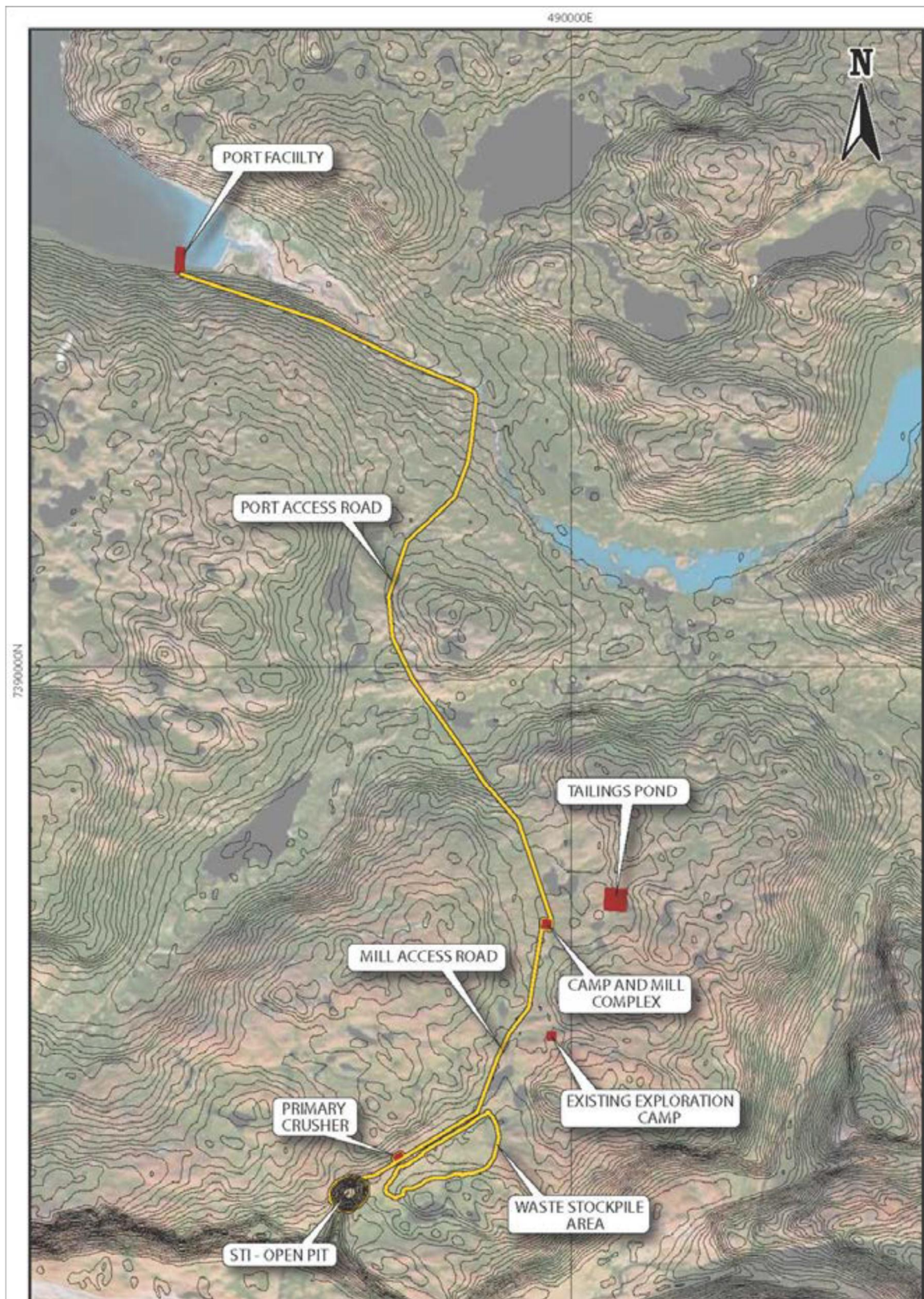
Concluding remarks on the results of the survey

The surveyed area is a very rich cultural landscape with many imprints from prehistoric as well as historic use of the land mainly for caribou hunting by the Inuit of the Thule Culture and their descendants. The significant heritage value of the area is manifested by the oral tradition related to the landscape and hunting. Although many protected structures are mapped it is presumed that a close and sound dialogue between HR and the NKA can result in a quite limited impact on the heritage structures if the mining plans are to be realized. The probability of necessary rescue excavation of structures are most likely in the southern part of the area (area A). For the rest of the surveyed area it will presumably be possible to avoid conflicts with heritage structures and sites. It has to be stressed that if an exploitation license is given to HR a close dialogue with the NKA on how to manage the cultural heritage structures should be started as soon as possible and it will be urgent to have at least area C thoroughly documented.

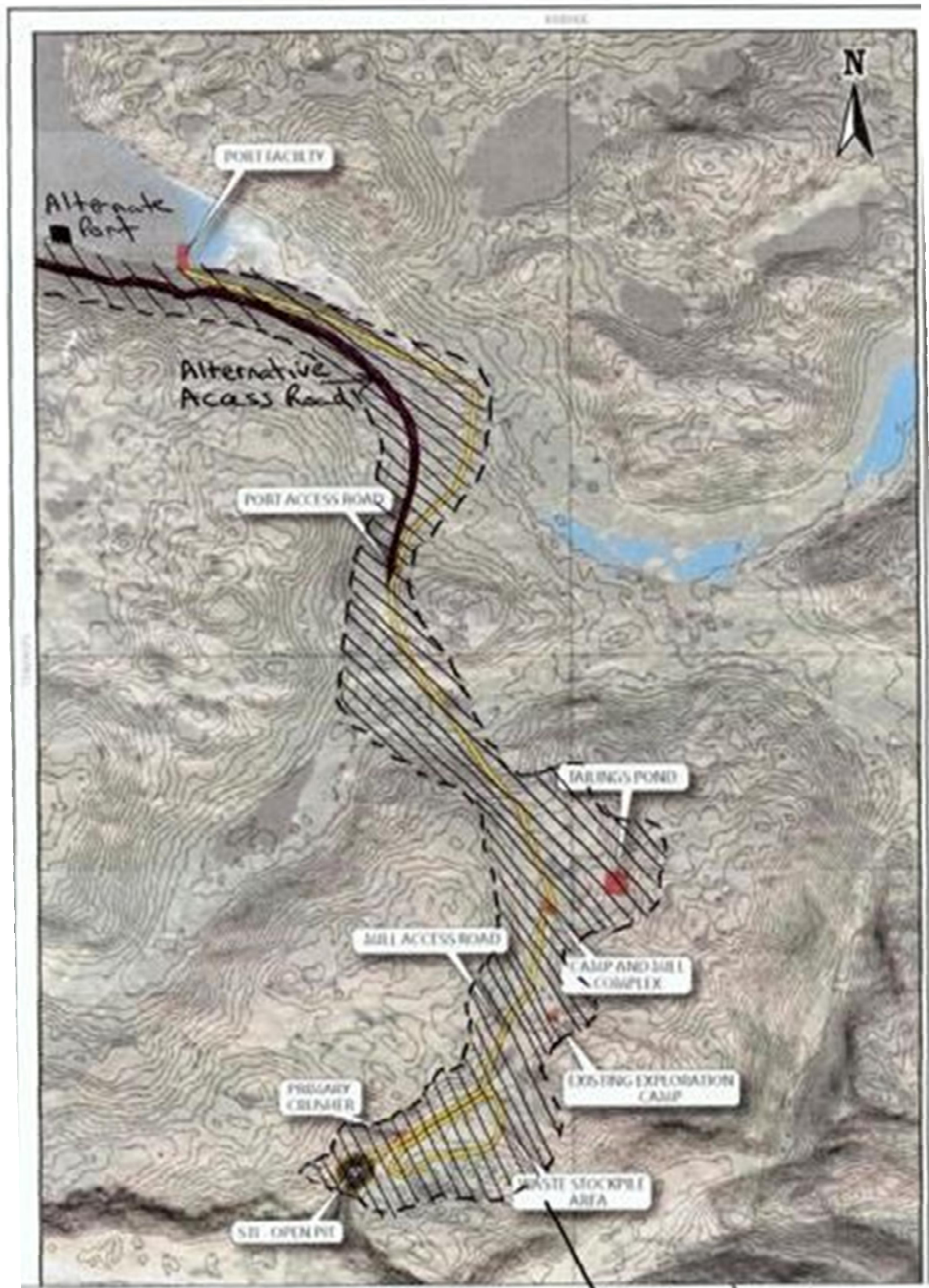
Maps



Map no.9: Mining facilities and road between process plant and port facilities.



Map no. 10: Road routing between mining facilities and from mining area to port facilities



Map no. 11: Alternate road routing and relocated port facilities.



Map no. 12: Map drawn by Jens Kreutzmann in 1863. Angujaartorfik is in the upper part.

Tabel no. 2: Structures in survey area A

Type structure of	Locality (serial number)																									Sum for transport
	1	2	3	4	5	6	7	8	9	10	11	12	13	14	15	16	17	18	19	20	21	22	23	24	25	
Tent house										2															1	3
Tent ring		2	4					2		1									1							10
Lookout																										
Hunter's bed	2	2				1			1	1		1		1					2				1	2	1	15
Hearth		1																	2							3
Cache		2	2					4	1	2	4										1	1	1			18
Play structure			1																							1
Grave			1																							1
Rock shelter														1												1
Cairn system																										
Shooting bl	4	1		1	1		4		1		5	8	2	1	2	1	1	2		2	2	1	7			46
Fox trap																										
Single cairn																	1									1
Marking		1																								1
Midden																										
Other		1																								1
Number of structures	6	10	8	1	1	1	4	6	3	6	9	9	2	3	2	1	2	2	5	2	3	2	9	2	2	101

Tabel no. 3: Structures in survey area A continued

Type of structure	Locality (serial number)																									Summed up
	26	27	28	29	30	31	32	33	34	35	36	37	38	39	40	41	42	43	44	45	46	47	48	49	transp	
Tent house					9							1								1					3	14
Tent ring			1																			4			10	15
Lookout					1				1																	2
Hunter's bed					2			1			1	1							1	2		1		1	15	25
Hearth			1																	1		2			3	7
Cache	1				3							1		1							2		1		18	27
Play house																									1	1
Grave																									1	1
Rock shelter																									1	1
Cairn syst.																			1		1		1			3
Shooting bl.		1		1	2	1	3			1	2	19	1	1	2	1	1	6			13	1		3	46	105
Fox trap																					1					1
Single cairn																			1				1		2	4
Marking																										0
Midden																										0
Other					2																	1			1	4
Number of structures	1	1	2	1	19	1	3	1	1	1	3	22	1	2	2	1	1	6	3	3	18	9	3	4	101	210

Table no. 4: Structures in survey area B

Type of structure	Locality (serial umber)													Sum
	50	51	52	53	54	55	56	57	58	59	60	62	63	
Tent house			5											5
Tent ring		1	2	1									1	5
Lookout			3				1	1						5
Hunter's bed			1	1		1			3	1	4			11
Hearth			4	1				1			3			9
Cache			2	1		1		1	3	1		1	1	11
Play structure			1											1
Grave			1											1
Rock shelter														
Cairn system														
Shooting blind	1	3	1	3	1				1	1	1			12
Fox trap														
Single cairn														
Middlen			1											1
meat drying rack														
Other			2	1										3
Number of structures	1	4	23	8	1	2	1	3	7	3	8	1	2	64

Table no. 5: Structures in survey area C

Type of structure	Locality (serial number)														Sum
	61	64	65	66	67	68	69	70	71	72	73	74	75	Ang	
Tent house	3					1								29	33
Tent ring						1	6						1	5	13
Lookout															
Hunter's bed	2	1				4									7
Hearth	4					2	6							21	33
Cache						2	5	1		2				6	16
Play structure	1													1	2
Grave									4	2				19	25
Rock shelter	2					1	1			1					5
Cairn system															0
Shooting blind			1	2	1										4
Fox trap									1	2	1	3			7
Single cairn	3					1									4
Middlen	2													2	4
Meat drying rack	2													18	20
Other	2					1	2			1			1	23	30
Number of structures	1	1	1	2	1	13	20	1	5	8	1	3	2	124	203

Tabel no. 6: Previously mapped structures

Type of structure	GAD site number in cart no. 66V2-01V											Sum
	25	31	36	37	39	40	41	72	74	87	93	
Tent ring	1							1	2	1	1	6
Hunter's bed				1								1
Cache	1		2			2					1	6
Cairn system		1		1		1	1					4
Cairn				1								1
Shooting blind		2		1	8	4	2					17
Number of structures	2	3	2	4	8	7	3	1	2	1	2	35

List of photos

PKK: Pauline K. Knudsen, POE: Pernille Ødegaard, FL: Fuuja Larsen

Structure nr.	Type of structure	Shot from	PKK	POE	FL
1A	Hunter's bed	N			55
1B	Hunter's bed	N			56 + 57
1C	Shooting bl.	N			58
1D	Shooting bl.	N + W			59 + 60
1E	Shooting bl.	N + W			61 + 62
1F	Shooting bl.	SE			63
2A	Hunter's bed	S + N			64 + 65
2B	Tent ring	N			66
2C	Cache	W + NW			67 + 68
2D	Cache	N + W			69 + 70
2E	Hunter's bed	SE + NW	96 + 97		
2F	Marking	N	66 + 90		
2G	Unidentified	S	91 + 92		
2H	Tent ring	S	93		
2I	Hearth	S	94 + 95		
2J	Shooting bl.	NW + SE	98 + 99		
3A	Tent ring	W	38		
3B	Tent ring	W	39		
3C	Tent ring		40		
3D	Tent ring		41		
3E	Play structure		44		
3F	Cache	NE			111
3G	Grave?	S, NW , W			112+13+14
3H	cache	NW			115
4	Shooting bl.		46		89 . 90

5	Shooting bl.		59		96
6	Hunter's bed	E and W			97 . 98
7A	Shooting bl.	N			100 -101
7B	Shooting bl.	E and N			102 . 103
7C	Shooting bl.	N			104
7D	Shooting bl.	N			105
8A	Cache	SE	68		
8B	Cache	SE			107
8C	Tent ring	N			108
8D	Tent ring	NW			109
8E	Cache	NW			110
8F	Cache	SE			116
9A	Cache	SE	71		
9B	Hunter's bed	SE	72		
9C	Shooting bl.				117
10A	Cache	N			118
10B	Cache	NW			120
10C	Tent house	E			121
10D	Tent house	E + N			122+123
10E	Tent ring				
10F	Hunter's bed	SW + E			125 + 126
11A	Shooting bl.	S + E	74 + 75		
11B	Cache	W	78		
11C	Shooting bl.	S	76		
11D	Cache	E	79		
11E	Shooting bl.	S + NE	80 + 81		
11F	Cache	W	82		
11G	Shooting bl.	SW	83		
11H	Cache	N	84		
11I	Shooting bl.	W	85		
12A	Shooting bl.	N			131
12B	Hunter's bed	W			132
12C	Shooting bl.	W			133
12D	Shooting bl.	NE			134
12E	Shooting bl.	NW			135
12F	Shooting bl.	SW			136
12G	Shooting bl.	SW			137
12H	Shooting bl.	SW			138
12I	Shooting bl.	N			139
13A	Shooting bl.	SW			140
13B	Shooting bl.	N			141
14A+B	Shelter + Hunter's bed	S,S,SW,E			142-146

14C	Hunter's bed	W			147
15A	Shooting bl.	N			148
15B	Shooting bl.	NE			150
16	Shooting bl.	W + NE	86 + 87		
17A+B	Shooting bl.	?+N	88 + 89		
18A	Shooting bl.	SW		300	
18B	Shooting bl.	S		301 + 302	
19A	Hunter's bed	SE + NW		303 + 304	
19B	Hearth	N+N		305 +306	
19C	Tent ring	E		307	
19D	Hearth	W		308	
19E	Hunter's bed	N	100		
20A	Shooting bl.	N			151
20B	Shooting bl.	S			152
21A	Shooting bl.	N			153
21B	Shooting bl.	N			154
21C	Cache	N			155
22A	Shooting bl.	E			156
22B	Cache				157
23A	Shooting bl.	E			158
23B	Shooting bl.	N	101		
23C	Shooting bl.	W	102		
23D	Shooting bl.	E			159
23E	Shooting bl.	E			160
23F	Shooting bl.	W+E	103 + 104		
23G	Shooting bl.	N			162
23H	Hunter's bed	N	107		
23I	Cache				161
24A	Hunter's bed	S			163
24B	Hunter's bed	N			164
25A	Tent house				165
25B	Hunter's bed	N			166
26	Cache	N			167
27	Shooting bl.	N			168
28A+B	Tent ring	W+ SW			169+ 170
29	Shooting bl.	W			171
30A	Shooting bl.	E	119		
30B	Lookout	SW	121		
30C	Tent house	N	122		
30D	Hunter's bed	E	123		
30E	Tent House	S + W	124 + 125		
30F	Unidentified	NE	126		

30G	Tent house complex	2xNW,S + N	127 - 130		
30H	Hunter's bed	W	131		
30I	Tent house	E + W	135 + 136		
30J	Cache	NE	137		
30K	Shooting bl.	E	138		
30L	Tent house	W	139		
30M	Tent house	W	140		
30N	Tent house	W	141		
30O	Unidentified	N + S	142 + 143		
31	Shooting bl.	N + S	108 + 109		
32A	Shooting bl.	SW + S		313 + 314	
32B	Shooting bl.	S		315	
32C	Shooting bl.	SW	132		
33	Hunters' bed	SE, SW, S		316 - 318	
34A	Lookout	W	133		
34B	Shooting bl.				
34C	Shooting bl.				
35	Shooting bl.				182
36A	Shooting bl.	S			183
36B	Shooting bl.	S			184
36C	Hunter's bed	S			185
37A	Shooting bl.	W			187
37B	Shooting bl.	W			188
37C	Shooting bl.	W			189
37D	Shooting bl.	W			190
37E	Shooting bl.	W			191
37F	Shooting bl.	NW			192
37G	Shooting bl.	W			193
37H	Shooting bl.				194
37I	Hunter's bed	S			195
37J	Shooting bl.	SW			196
37K	Shooting bl.	W			197
37L	Shooting bl.	W			198
37M	Shooting bl.	W			199
37N	Tent house	3XW, S + N			200 . 204
37O	Shooting bl.	W			205
37P	Shooting bl.	W			207 + 208
37Q	Shooting bl.	W			209
37R	Shooting bl.	W			210
37S	Cache	S			211
37T	Shooting bl.	SW			212
37U	Shooting bl.	W+W			213 + 214
37V	Shooting bl.	W			215
38	Shooting bl.	SW			216

39A	Shooting bl.	N		345	
39B	Cache	S + E + ?		346-348	
40A	Shooting bl.	N + S	147 + 148		
40B	Shooting bl.	W	149		
41	Shooting bl.		150		
42	Shooting bl.	NE + SW	153 + 154		
43A	Shooting bl.	S + N	158 + 159		
43B	Shooting bl.			355	
43C	Shooting bl.	N		359	
43D	Shooting bl.	S	160 + 161		
43E	Shooting bl.	N + NE		360+361	
43F	Shooting bl.	W	162		
44A	Hunter's bed	N + E	163 + 164		
44B	Marking	N	165		
44C	Cairn system	N	166		
45A	Hunter's bed	N + W - ?	192+ 193		246
45B	Dwelling structure				
45C	Hearth		194		
46A	Shooting bl.	N + S		399 + 400	
46B	Shooting bl.	N		401	
46C	Fox trap		195		
46D	Shooting bl.	NE + S	196 + 197		
46E	Shooting bl.		198		
46F	Shooting bl.	E			247
46G	Shooting bl.	E			248
46H	Cache	S			249
46I	Cache	W			250
46J	Shooting bl.	W			251
46K	Cairn system	S			252
46L	Shooting bl.	W			253
46M	Tent house	W + S			254 + 255
46N	Shooting bl.	W			256
46O	Shooting bl.	S			
46P	Shooting bl.	NE			258
46Q	Shooting bl.	W			259
46R	Shooting bl.	N			260
46S	Tent house	S+S+N		402 - 404	
46T	Cache	SE		405	
46U	Two stones on a boulder				257
47A	Hunter's bed	S			262
47B	Hearth	S			263
47C	Pond				264

47D	Shooting bl.	E			265
47E	Tent ring	N + S			266 + 267
47F	Tent ring	W			268
47G	Tent ring	W			269
47H	Hearth	S	205		
47I	Tent ring	NW + SW	203 - 204		
48A	Cairn				
48B	Shooting blind				
48C	Marking on a boulder		199		
48D	Marrking		200		
49A	Shooting bl.	S		410	
49B	Shooting bl.	NW + SE	201 - 202		
49C	Hunter's bed	S			275
49D	Shooting bl.	SW			282
50	Shooting bl.	NW			285
51A	Shooting bl.	E			286
51B	Shooting bl.	E			287
51C	Tent ring	S	221		
51D	Shooting bl.	E			288
52A	Shooting bl.	W			300
52B	Hunter's bed	E			301
52C	Grave?	SW			302 + 303
52D	Lookout	S			304
52E	Lookout	S			305
52F	Lookout	W			306
52G	Hearth	W			307
52H	Cache		229 + 230		309
52I	Tent ring	SW			311 + 312
52J	Play structure	S + N + ?	235 + 236		313 + 314
52K	Pile of S				315
52L	Hearth				320
52M	Hearths and caches	E, S, W + NW			316 -319
52N	Tent houses				321 . 324
52O	Table & Chairs	N			325
52P	Midden	S			326
53A	Hunter's bed	E			337
53B	Shooting bl.	SW			339
53C	Shooting bl.	N			340
53D	Hearth	N			341
53E	Unidentified	S	254		
53F	Shooting bl.	W			342
53G	Tent ring	SW			344

53H	Cache	NW		449	
54	Shooting bl.	N			345
55A	Cache	NW	257		
55B	Hunter's bed	SE + SE	258 + 259		
56	Unidentified	S			347
57A	Cache	NW	261		
57B	Lookout	N + NE	262 + 263		
58A	Cache		268		
58B	Cache	NE	269		
58C	Hunter's bed	S			351
58D	Cache	N + S		456 + 458	
58E	Hunter's bed	W	270		
58F	Shooting bl.	NE		459	
58G	Hunter's bed	W	272		
59A	Hunter's bed	N			353
59B	Shooting bl.	N			353
59C	Cache	W			354
60A	Hunter's bed	N, W, W + W	274 - 276		355
60B	Hearth	S + N	277		356
60C	Hearth	N + NE		463	
60D	Hunter's bed	S		464	
60E	Hunter's bed	SW		465	
60F	Hunter's bed	W	278		
60G	Hearth	W		466	
60H	Shooting bl.	SE		460	
61A	Play structure	S			361
61B	Cairn	S			364
61C	Cairn	S			365
61D	Cairn	NW			366
61E	Hunter's bed	E			369
61F	Shelter + Hunter's bed	W, W, S			371 . 372
61G	Shelter	S			374
61H	Dwelling structure	W			375
61I	Hearth	SE			376
61J	Tent hous	E			377
61K	Midden	E			378
61L	Midden	W			379
61M	Drying strucre	N			380
61N	Drying strucre	N			381
61O	Table & Chairs	E			382
61P	Hut	W, N, E, S			383 . 386
61Q	Tent house	NE			389

61R	Hearths	S, S, E, NE			416 . 419
62	Cache	E			358
63A	Tent ring	W			355
63B	Cache	N			356
64	Hunter's bed	E + W		461 + 462	
65	Shooting bl.	E			391
66A+B	Shooting bl.	N + E			395 + 396
67	Shooting bl.	N			400
68A	Arrow	E + E			403 + 408
68B	Cache	N			404
68C	Hearth	W			405
68D	Hearth	NW			406
68E	Hunter's bed	E			409
68F + G	Dwelling structure	S + N + W			410 . 412
68H	Tent ring	E			420
68I	Hunter's bed	W			421
68J	Shelther	NW + E	305 + 306		
68K	Hunter's bed	E			422
68L	Hunter's bed	N			423
69A	Unidentified	W			430
69B	Tent ring	W			
69C	Cache	N			
69D	Cache	E			
69E	Tent ring	W			
69F	Tent ring	NW			
69G	Hearth	E			
69H	Tent ring	SE			
69I	Hearth	NW			
69J	Cache	N			
69K	Cache	W			
69L	Cache	W			
69M	Hearth	W			
69N	Hearth	W			
69O	Tent ring	NW			
69P	Hearth				
69Q	Tent ring	E + W			
69R	Boulder with signatures				
69S	Shelter	W	301		
70	Cache	E			431
71A	Grave	E			
71B	Fox trap	NW			442
71C+D+E	Graves	N, NW and N			447 - 449

72A	Unidentified	W			444
72B	Shelter	SE			443
72C	Grave	S + W			450 + 551
72D	Grave	W			452
72E	Fox trap	W			453
72F+G	Cache	W + E	307 + 308		
72H	Fox trap	N			454
73	Fox trap	W			455
74A+B	Fox trap	E			456
74C	Fox trap	S	310		
75A+B	Tent ring + cache?	SE + S	350 + 351		

Bibliography

Andreasen, Claus

2000 Rapport vedr. arkæologisk rekognoscering i Sarfartoq området, Maniitsup Kommune, Vestgrønland sept. 2000 Rapport nr. 33-384

Aron of Kangeq

1999 *Således skriver jeg, Aron. Samlede fortællinger og illustrationer af Aron fra Kangeq (1822-1869)*. Editor Kirsten Thisted. Atuakkiorfik. Nuuk.

Berthelsen, Aalibaaraq

2003/2004 Misigisat paasisallu in *Kalaaleq*. Nr. 8-10, 2003 og nr. 1-11, 2004.

Brink, Jack W.

2005 Inukshuk: Caribou Drive Lanes on Southern Victoria Island, Nunavut, Canada *Arctic Anthropology*, Vol. 42, No. 1, pp. 1-28.

Egede, Hans

1925 Relationer fra Grønland 1721-36 & Det Gamle Grønlands ny Perustration. *M.o.G. no. 54 1. 304 & 305-404*

Gabriel, Mille, Grønnow, Bjarne, Odgaard, Ulla & Clemens og Kerstin Pasda

2002 Bosættelsesmønstre i det centrale Vestgrønland. Rapport om undersøgelserne i Angujârtorfiup Nunâ, Manitsaq kommune, sommeren 2001. *SILA . Nationalmuseets Center for Grønlandsforskning, Feltrapport 4*.

Goliathsen, Sofie

2002 Interview on the use of Angujaartorfiup Nunaa undertaken by Pauline Knudsen in Kangaamiut in April. The transcription of the interview is in Greenlandic.

Gotfredsen, Anne Birgitte and Tinna Møbjerg

2004 Nipisat . a Saqqaq Culture Site in Sisimiut, Central West Greenland. *Meddelelser om Grønland, Man & Society, vol. 31*. Copenhagen.

Grønnow, Bjarne

1981 Fortidsminderegistrering i Sarfartoq . Dalen, Maniitsaq Kommune, 1981. Beretning til Grønlands Landsmuseum. Rapport nr. 33-130

-

1982 *Fortidsminderegistrering i Angujaartorfiup Nunaa ("Sarfartôq-dalen")*, Maniitsaq kommune, 1982

-

1986 Recent Archaeological Investigations of West Greenland Caribou Hunting. *Arctic Anthropology*, vol. 23, 1-2. s. 57 . 80. Chicago.

Grønnow, Bjarne, M. Meldgaard og J. Berglund Nielsen

1983 Aasivissuit . The Great Summer Camp. Archaeological, ethnographical and zoo archaeological studies of a caribou-hunting site in West Greenland. *Meddelelser om Grønland, Man & Society* 5. København.

Gulløv, Hans Christian

1997 From Middle Ages to Colonial Times. Archaeological and ethno historical studies of the Thule culture in South West Greenland 1300-1800 AD. *Meddelelser om Grønland, Man a & Society* 23.

-

1985 Whales, Whalers, and Eskimos: The Impact of European Whaling on the Demography and Economy of Eskimo Society in West Greenland. In: *Cultures in Contact*. W.W. Fitzhugh, red

Kapel, Hans

- 1987 Arnangarngup Qoorua 1987. Foreløbige baggrundsundersøgelser i forbindelse med planer om råstofudnyttelse i Sarfartoq-Dalen. Arkæologi. Januar 1988. Rapport nr. 33-136.

-

- 1996 Angujaartorvik . A Paleo-eskimo Caribou Hunting Camp. In: *The Paleo-eskimo cultures of Greenland*. Edited by Bjarne Grønnow and John Pind. Danish Polar Center. S. 119 . 128

Knudsen, Pauline

2002

Brugen af Angujaartorfiup Nunaa i 1900-tallet. Bachelorprojekt ved Institut for Kultur- og Samfundshistorie ved Ilisimatusarfik, Nuuk.

-

- 2009 Culture historical significance on areas Tasersiaq and Tarsartuup Tasersua in West Greenland & Suggestions for Salvage Archaeology and Documentation in Case of Damming Lakes. Report prepared for ALCOA, May 2009. Greenland National Museum & Archives.

-

- 2009a *An Archaeological Survey in the West Greenland Inland, summer 2008, in Advance of Proposed Development of Hydroelectric Power. Report prepared for ALCOA*. Greenland National Museum & Archives.

-

- 2009b Archaeological Surveys in the West Greenland Inland, summer 2009, in Advance of Proposed Development of Hydroelectric Power. - Report prepared for ALCOA. Greenland National Museum and Archives

Kreutzmann, Jens

- 1997 *Fortællinger og akvareller*, published by Kirsten Thisted. Atuakkiorfik.

Larsen, Lotte Melchior

- 1980 Eskimoiske Pladser i Sarfartôq-området, Søndre Strømfjord. Rapport nr. 33-128

Lund-Drosvad, Andreas

- 1959 Drivjagt på rendyr. In: *Atuagagdliutit/Grønlandsposten* nr.7, side 8.

Lyberth, Andreas

- 2002 Interview on the use of Angujaartorfiup Nunaa undertaken by Pauline Knudsen in Kangaamiut in April. The transcription of the interview is in Greenlandic.

Lyberth, Kisia

- 2002 Interview on the use of Angujaartorfiup Nunaa undertaken by Pauline Knudsen in Kangaamiut in April. The transcription of the interview is in Greenlandic.

Meldgaard, Morten

- 1986 The Greenland caribou . zoogeography, taxonomy, and population dynamics. *Bioscience*, 20. *Meddelelser om Grønland*.

Meldgaard, Morten

- 2004 Ancient Harp Seal Hunters of Disco Bay in *Meddelelser om Grønland. Man & Society vol. 30*. Copenhagen.

Møbjerg, Tinna

- 1998 The Saqqaq culture in the Sisimiut municipality elucidated by the two sites Nipisat and Asummiut. In: *Man, Culture and Environment in Ancient Greenland*. Dansk Polar Center. Copenhagen.

Odgaard, Ulla, Grønnow, B., Gabriel, M., Pasda, C., Pasda, K. and Damm, C.

- 2003 *Bosættelsesmønstre i det Centrale Vestgrønland. Rapport om undersøgelserne i Angujaartorfiup Nunaa, Maniitsoq Kommune, sommeren 2002*. SILA Feltrapport 12, Nationalmuseet København, 109 p.

Odgaard, Ulla, Knudsen, P., Petersen, H. C. & Lembo, A. 2005

- 2005 *Bosættelsesmønstre i det centrale Vestgrønland. Rapport om Undersøgelserne i Angujaartorfiup Nunaa, Maniitsoq Kommune, sommeren 2003. SILA Feltrapport nr. 20*

- , Fuuja Larsen, Mikkel Myrup, Marie Leander Petersen, Anne Tømmervåg, Aoife Daly, Charlotte Damm and Kerstin Pasda
An Archaeological Survey in the West Greenland Inland, summer 2007, in Advance of Proposed Development of Hydroelectric Power. By Ulla Odgaard (ed.) *Report prepared for ALCOA*. Greenland National Museum & Archives.
- , Kerstin Pasda, Suna Christensen & Tea Dahl Christensen
Angujaartorfik. Rensdyrjagt I Fortid og Nutid. Rapport fra feltarbejdet i Angujaartorfik 2010. Sila feltrapport nr. 35.

Pasda, Clemens

- 2004 Hotel Grønland. Human use of caves and rock shelters in West Greenland. *BAR International Series 1309*.

Pasda, Kerstin and Ulla Odgaard

- 2011 Nothing is Wasted: The ideal +nothing is wasted+and divergence in past and present among caribou hunters in Greenland. *Quaternary International Vol. 238*

Petersen, H.C.

- 1992 *Ataraaq*. Aqqissuisut: Nunat Aqqinik Aalajangiisartut. Grønlands Stednavnenævn. Nuuk

Petersen, Ole

- 1970 Majorqaq. In: *Tidsskriftet Grønland nr. 1/1970*

Rosing, Regine

- 2002 Interview on the use of Angujaartorfiup Nunaa undertaken by Pauline Knudsen in Kangaamiut in April. The transcription of the interview is in Greenlandic.

Secher, Karsten, Jens Bøcher; Bjarne Grønnow, Sune Holt, H.C. Petersen og Henning Thing

- 1987 *Arnangarngup Qoorua, Paradisdal i tusinder af år*. Pilersuiffik. Nuuk

Steward, Andrew; M. Darren Keith and Joan Scottie

- 2004 Caribou Crossings and Cultural Meanings: Placing Traditional Knowledge and Archaeology in Context in an Inuit Landscape.