

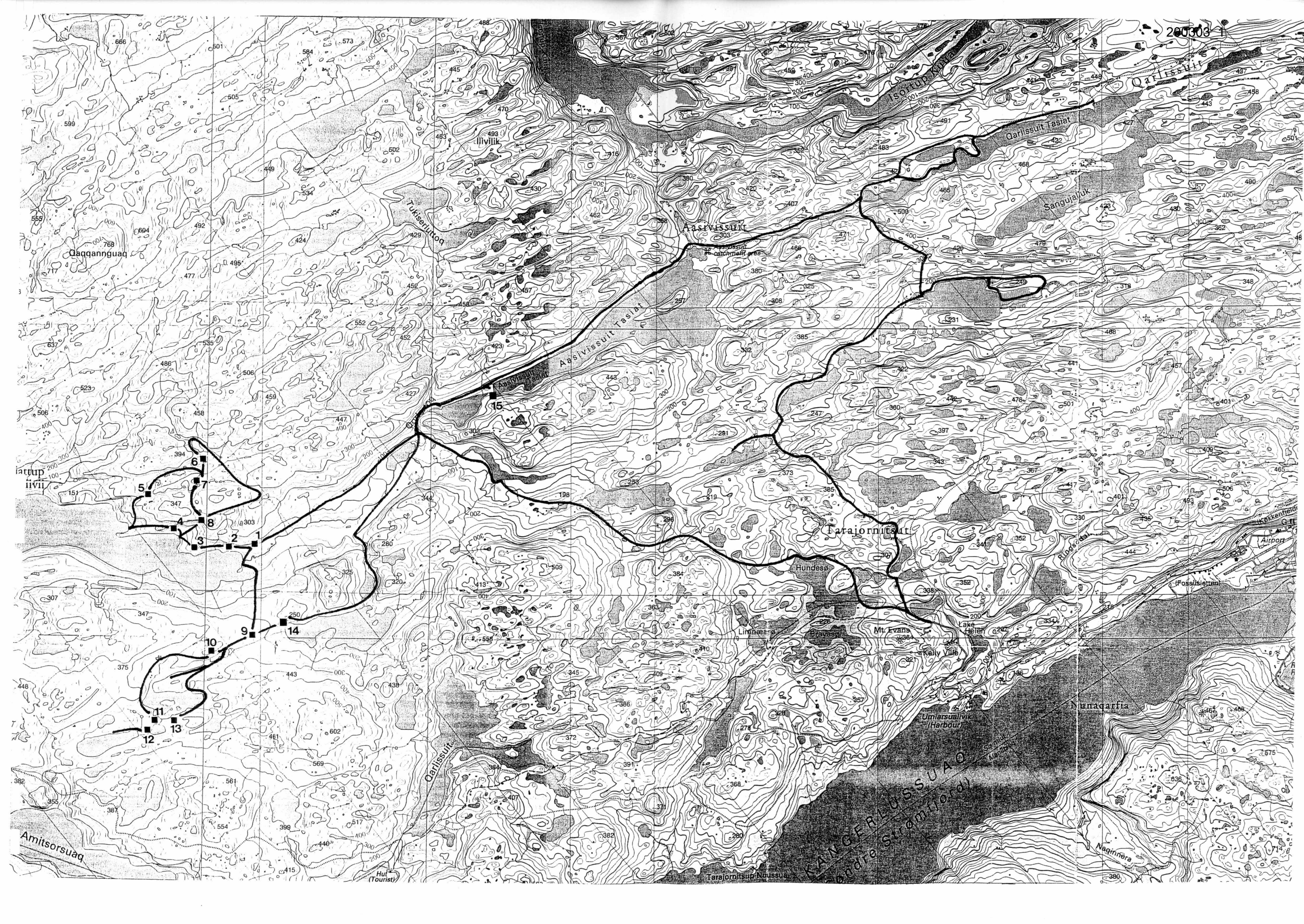
200303

51.50.08  
200303\_1

# FIELD REPORT

Notes on archaeological sites  
documented in July 2003  
east of Kangerlussuaq Airport  
(Sisimiut Municipality)







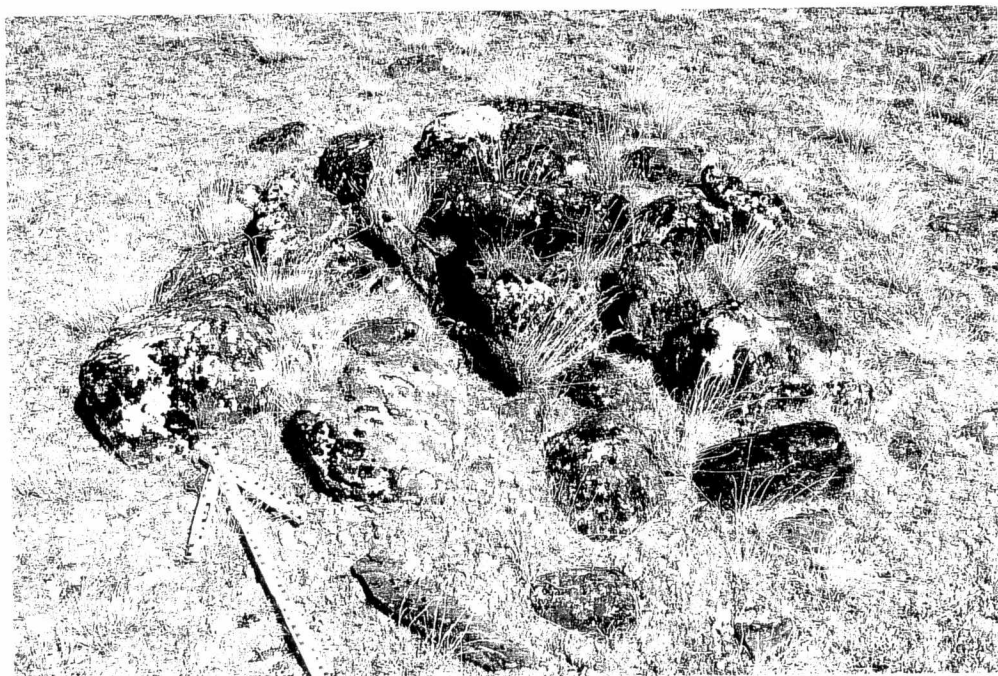
The field report documents archaeological sites seen during field-work (16<sup>th</sup>-27<sup>th</sup> July 2003) on osteometry, age and sex determination of recent caribou carcasses found in the eastern part of the Sisimiut Municipality. As field-work was occupied with archaeozoological research documentation of sites was done just by short notes, GPS and foto. Site no. 15 was described earlier (Field Report 2000).

The field report was sent to Greenland National Museum & Archives, Sisimiut Museum, SILA/Danish National Museum, Danish Polar Center.

Adress of author: Clemens Pasda  
Professur für Urgeschichte  
Universität Jena  
Löbdergraben 24a  
D – 07743 Jena

1: meat cache

round/oval with 1,7x1,6m  
approx. 40 stones around some kkind of chamber  
strong cover with lichen and grass  
N 67°00.744' WO 51°27.954'





2: fox trap

stone chamber covered with stone slabs

1,3x0,6x0,4m

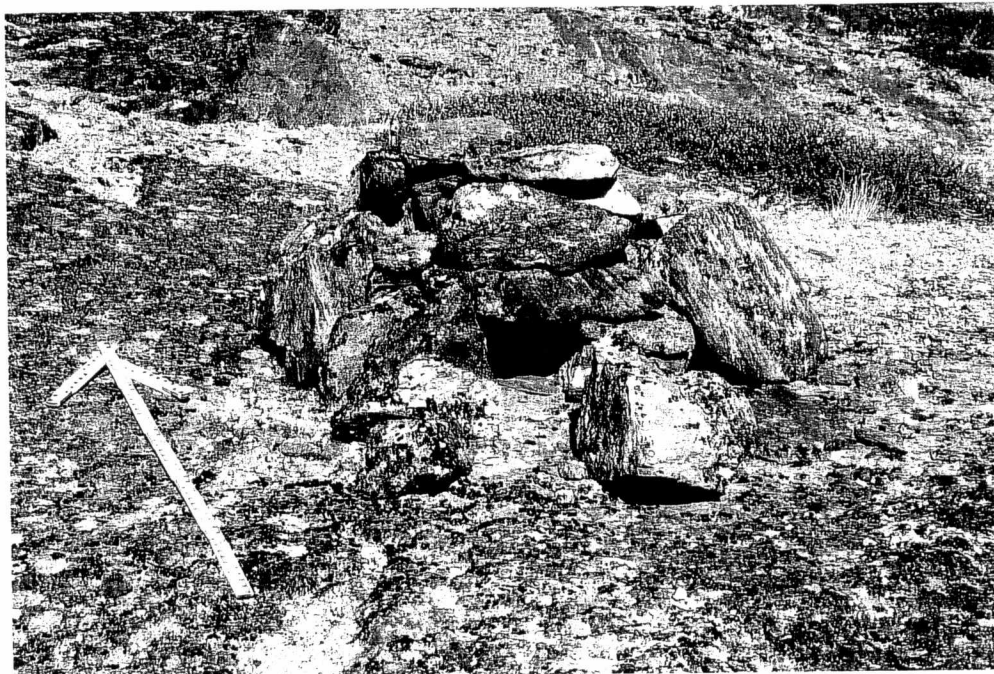
strong cover with lichen, on one side covered with moss

N 67°00.727' WO 51°28.999'



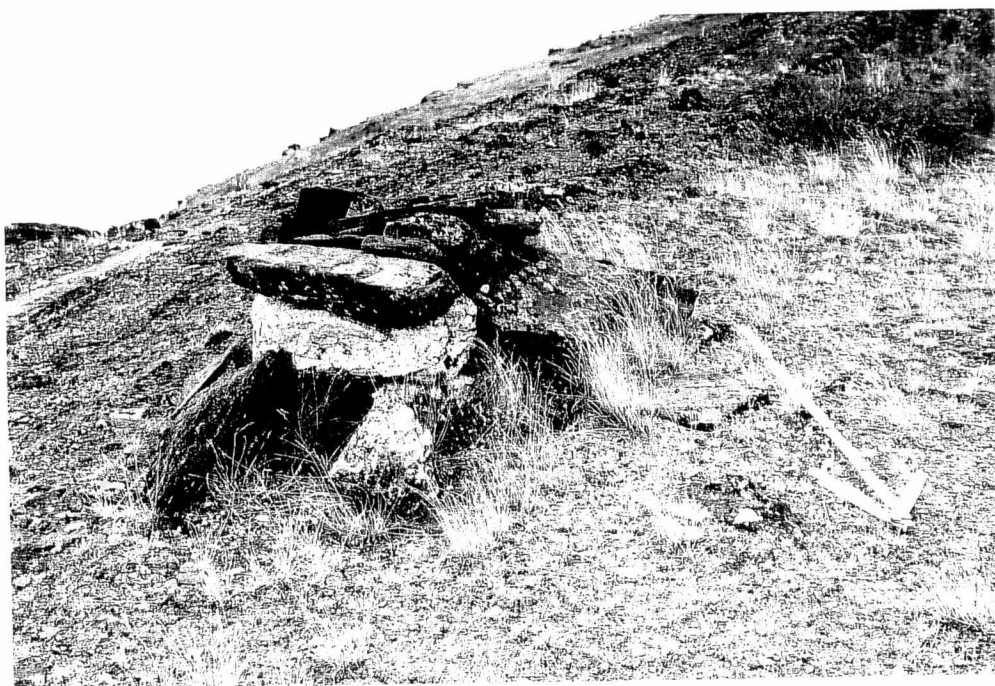
3: two fox traps trap A

chamber with lichen-covered stones  
1,0x1,0x0,5m  
N 67°00.706' WO 51°30.717'



trap B

chamber with lichen-covered stones  
1,0x0,8x0,4m  
50-60m south of A





4: possible head-cairn

head-sized, lichen-covered stone on 1,5m high boulder  
N 67°01.066' WO 51°31.321'



5: cairn

built out of approx. 15 stones (60cm high)  
all stones lichen-covered except the last one on the top  
N 67°01.692' WO 51°32.509'  
approx. 100m far away from a recent tent-ring





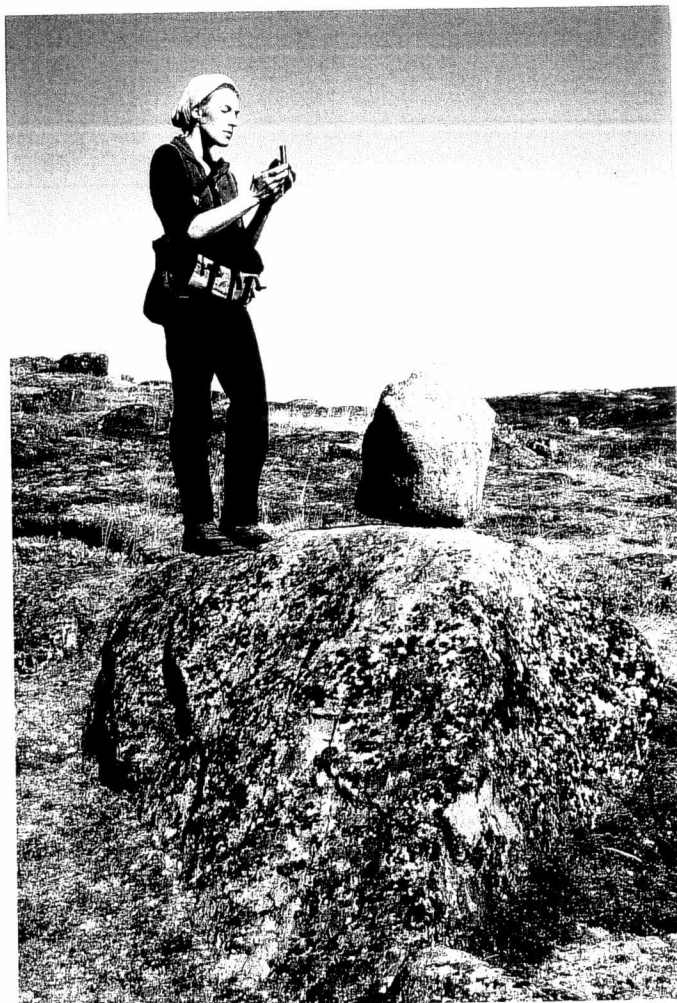
6: head-cairn

30cm large, grey stone on a natural, red rock  
N 67°02.223' WO 51°30.267'



7: head-cairn

40x20cm large stone on a natural rock  
partly covered with lichen  
N 67°01.849' WO 51°30.398'





8: two cairns/signs

N 67°01.237' WO 51°30.031'



eastern sign with lichen covered stones, in center a broken 1m long stone (diam. 15cm)



western sign (10m away) with lichen covered stones, in center a broken 80cm long stone (diam. 20cm)



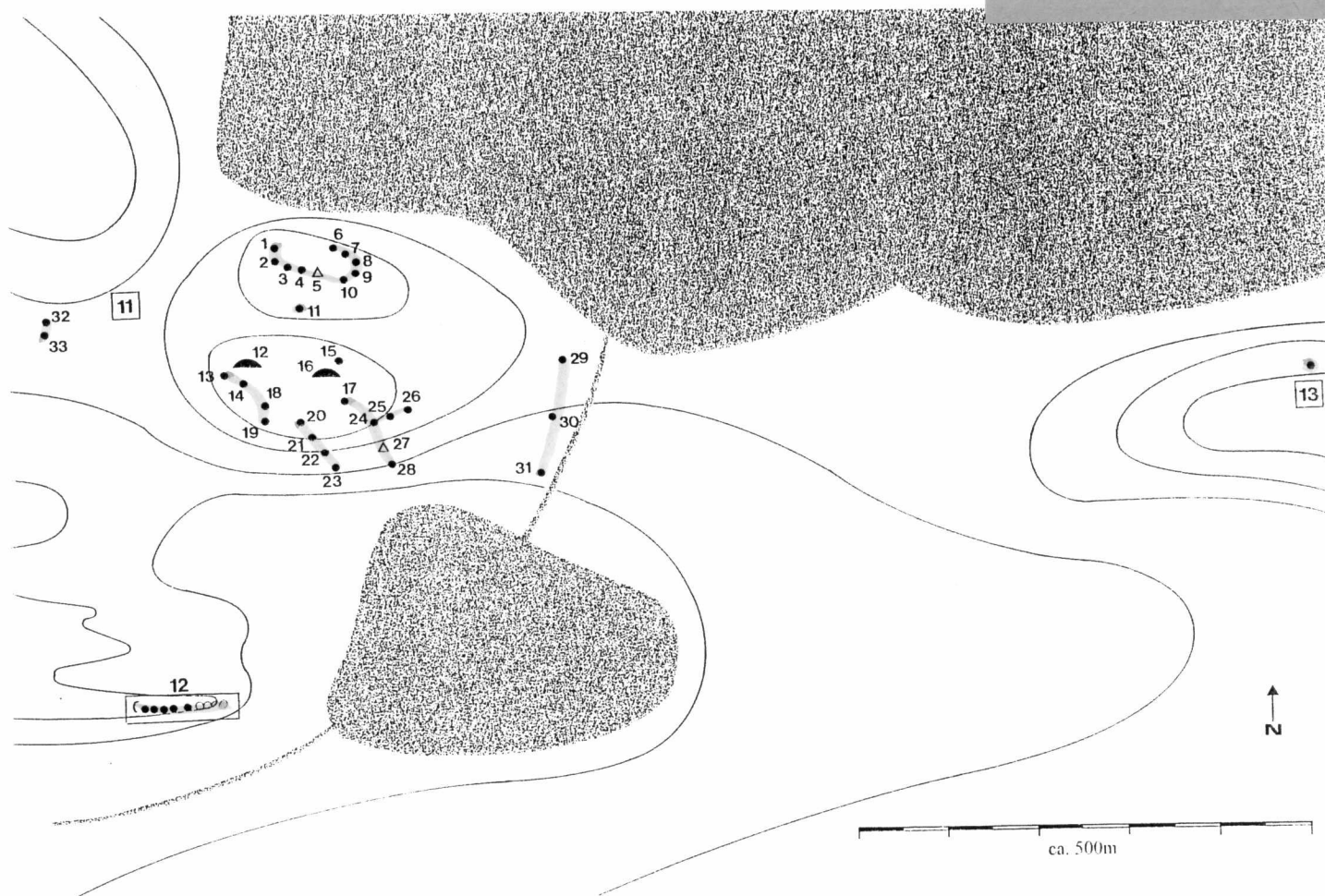
- |     |                     |   |
|-----|---------------------|---|
| 9:  | cairn               | recent inuksuit-like cairn<br>100m south another one  |
| 10: | cairn               | recent inuksuit-like cairn<br>only seen from valley-bottom  |
| 11: | large hunting-drive | N 66°57.823' WO 51°32.111'<br>1-4, 6-11, 13-26, 28-33: head-cairn<br>5, 27: cairn with two stones<br>12, 16: meat cache |
| 12: | small hunting-drive | N 66°57.531' WO 51°32.502'<br>from W to E: nos. 1-12<br>1: shooting-covert<br>2-6: head-cairn<br>7-12: (natural?) slabs |
| 13: | possible head-cairn | only seen from lake-side  |

66° 59' 142 (9)  
51° 27' 547

66V2 01V 172

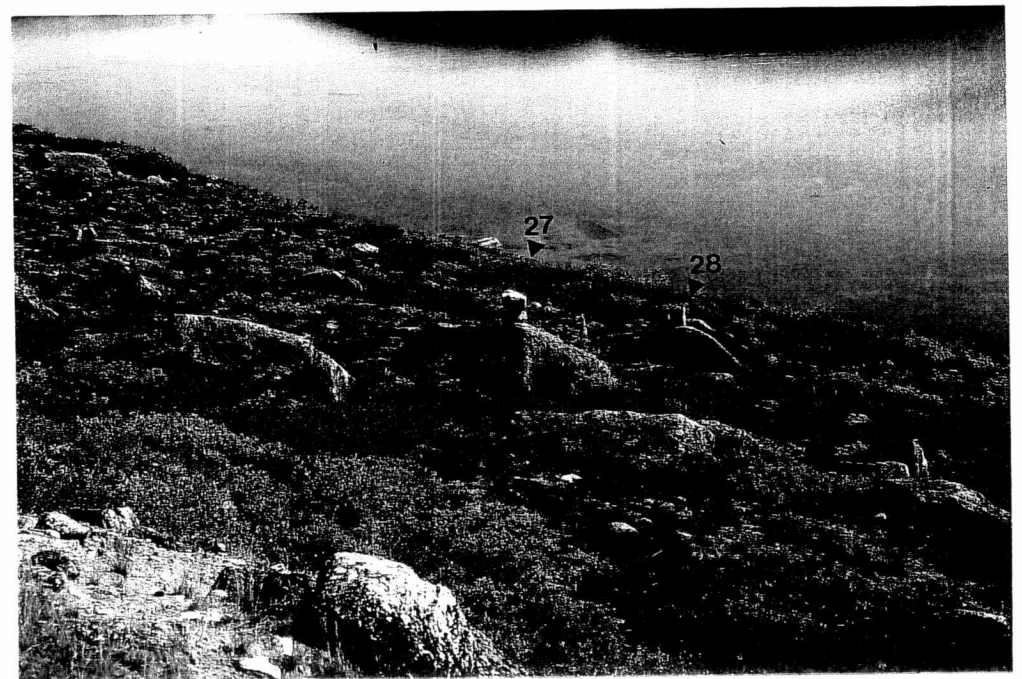
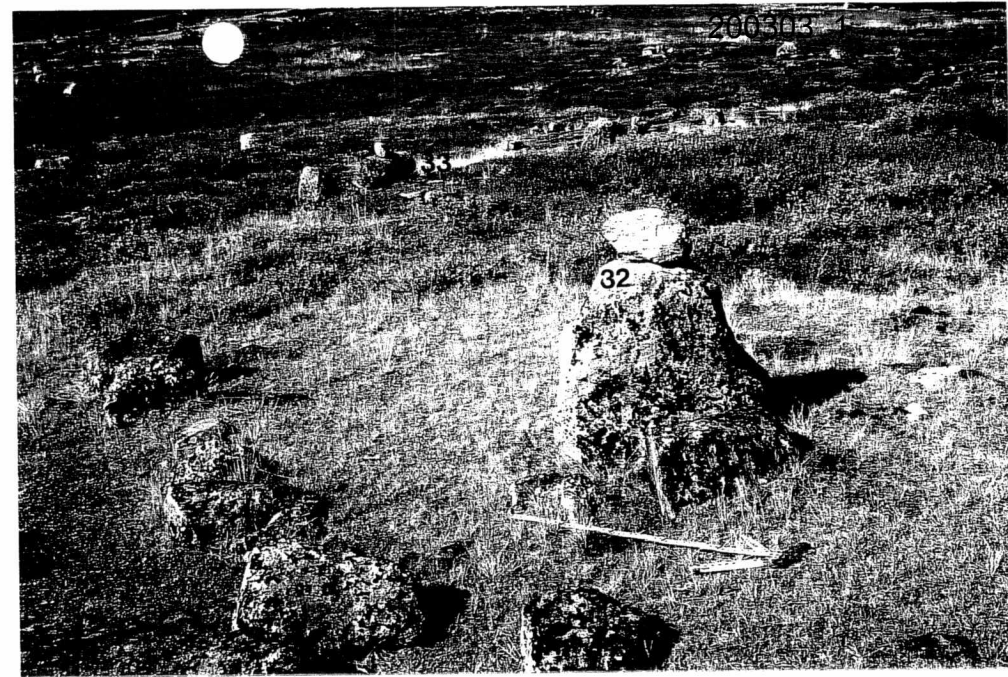
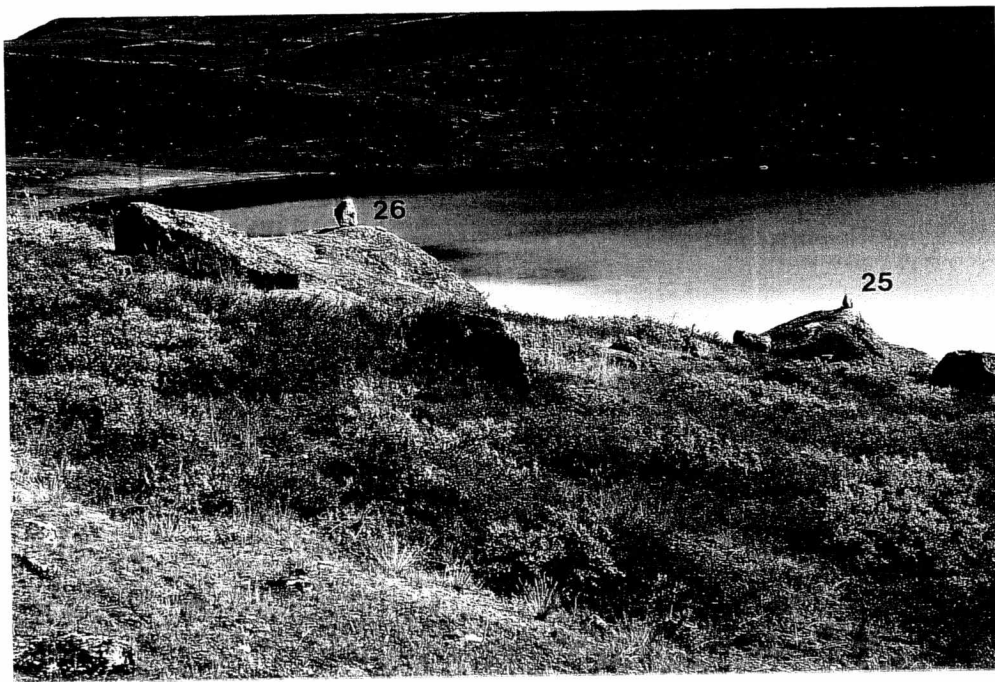
66V2 01V 173

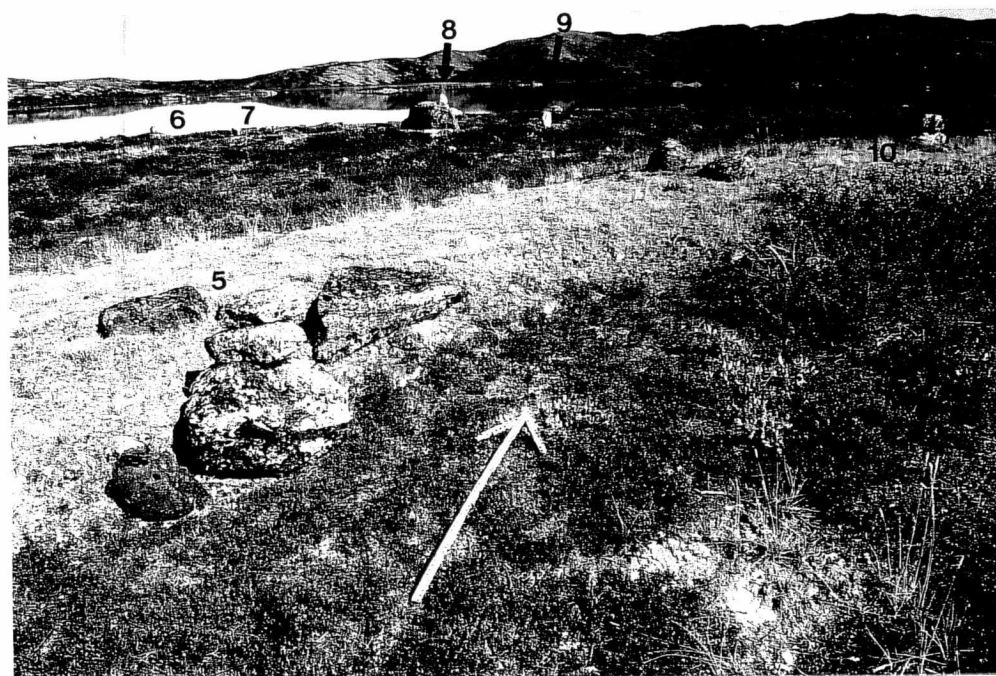
66° 57' 499' (13)  
51° 31' 138'



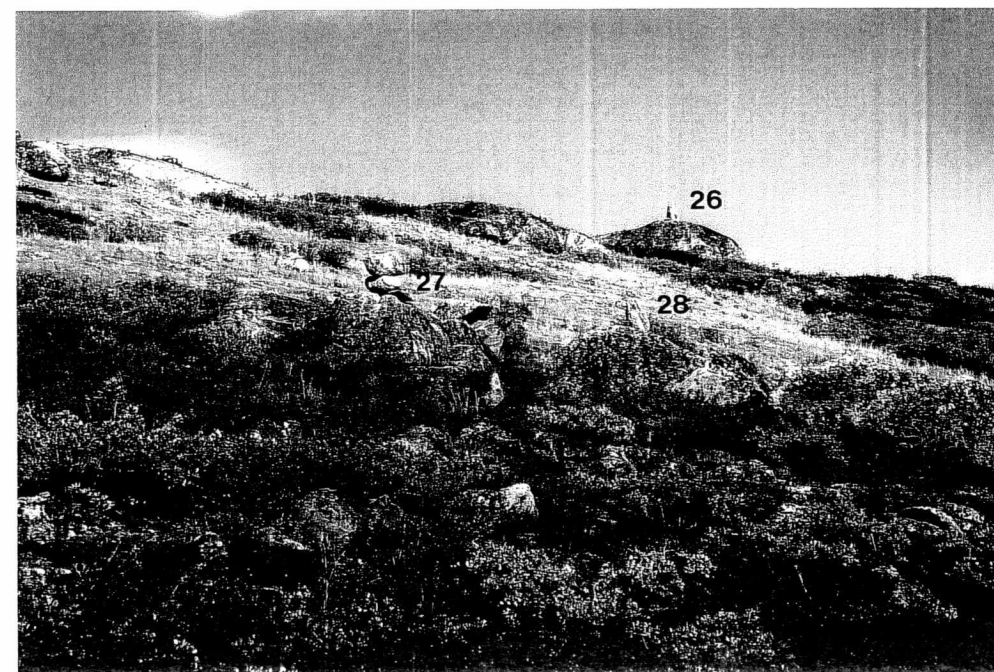
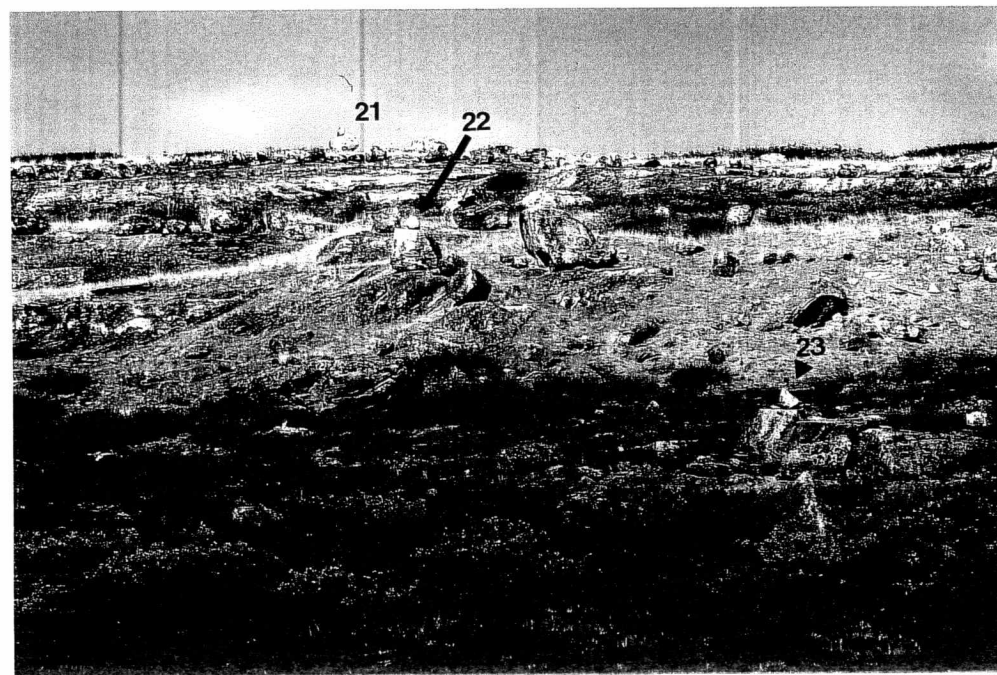


11

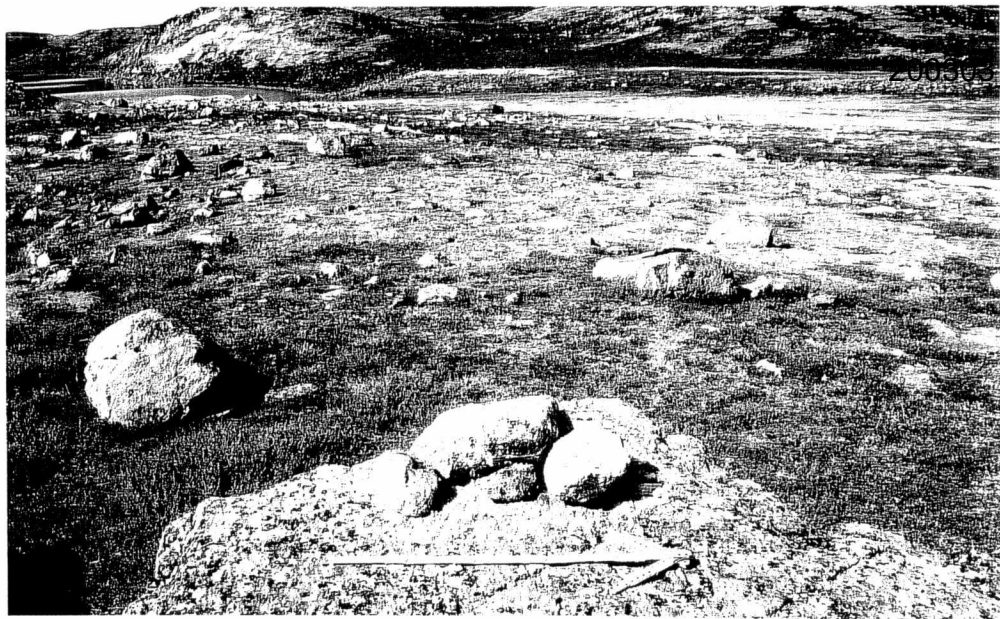




11



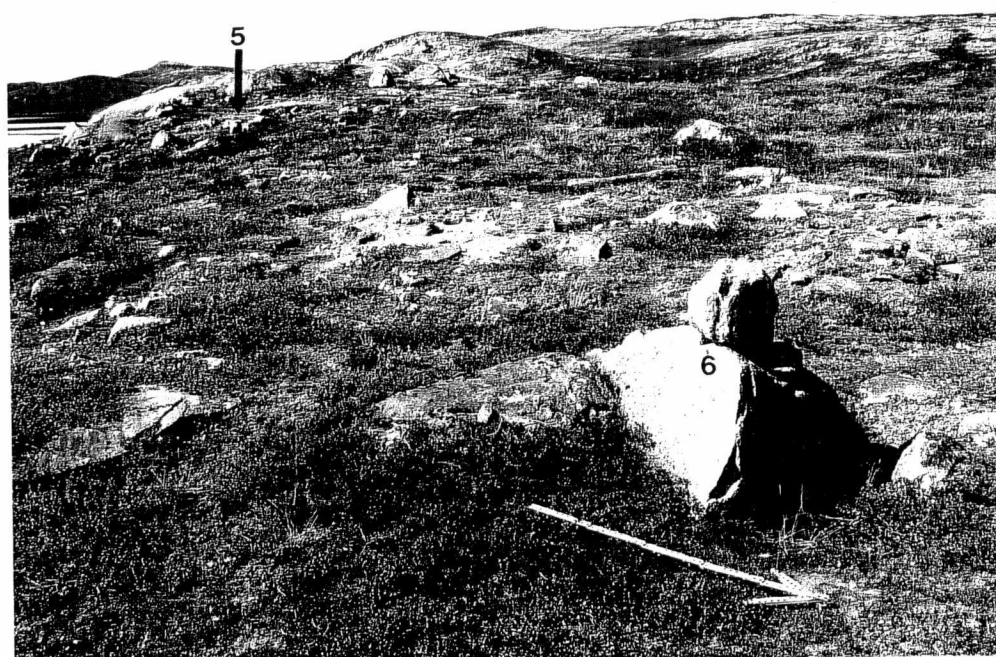


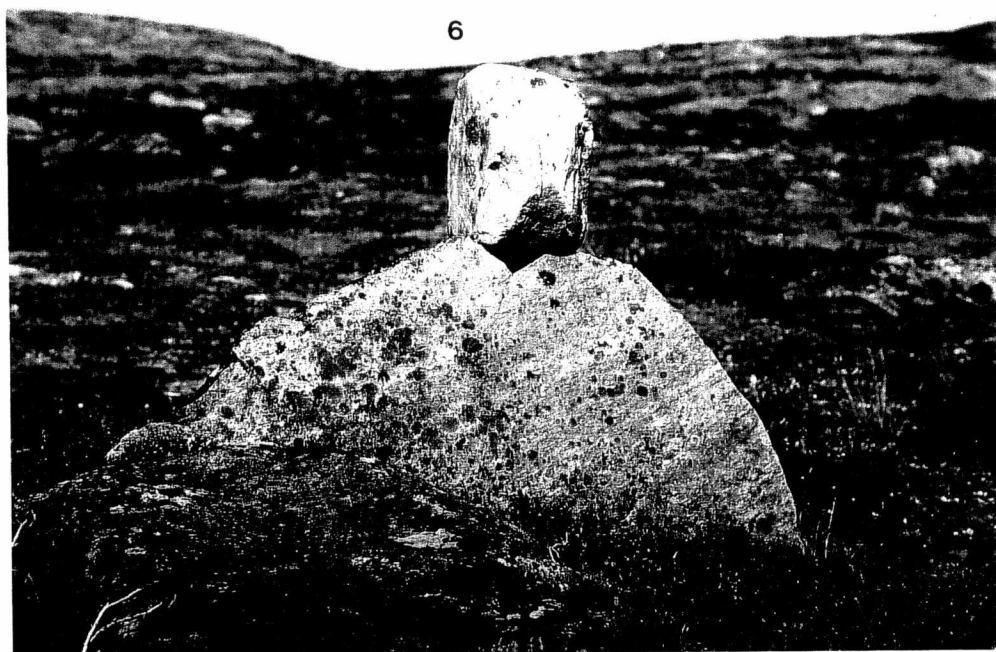


20030 1









14: recent hunters' bed

hunters' bed-like structure under boulder-overhang  
N 66°59.506' WO 51°26.621'



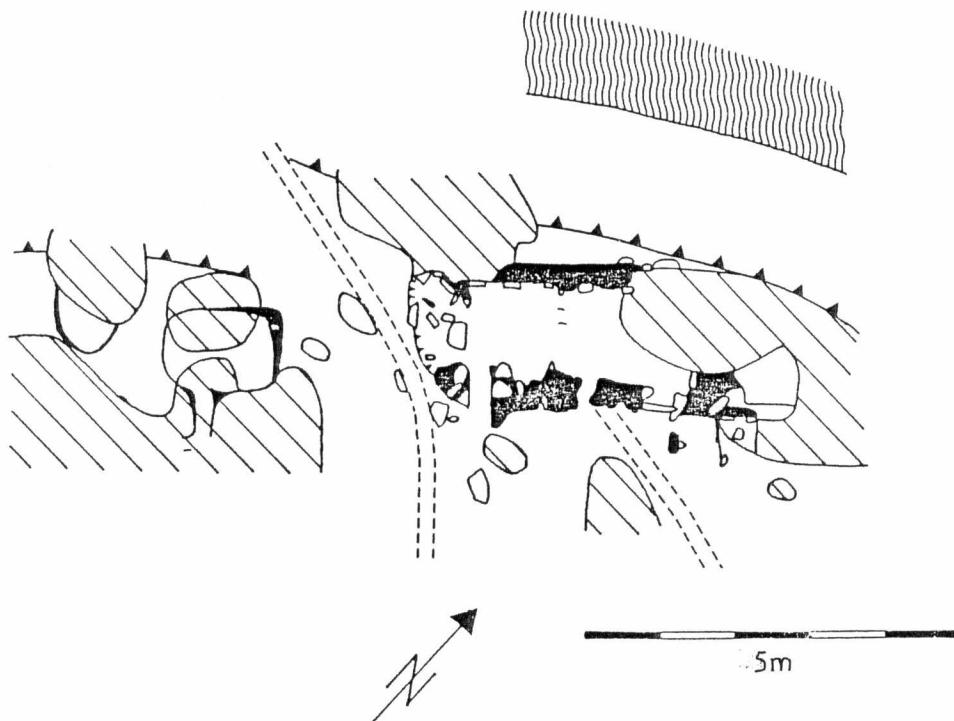


15: peat house

documented in 2000



from north-east



black: peat/turf. hatching: dwarf shrub. white: stones. broken lines: caribou path. wavy lines: lake.